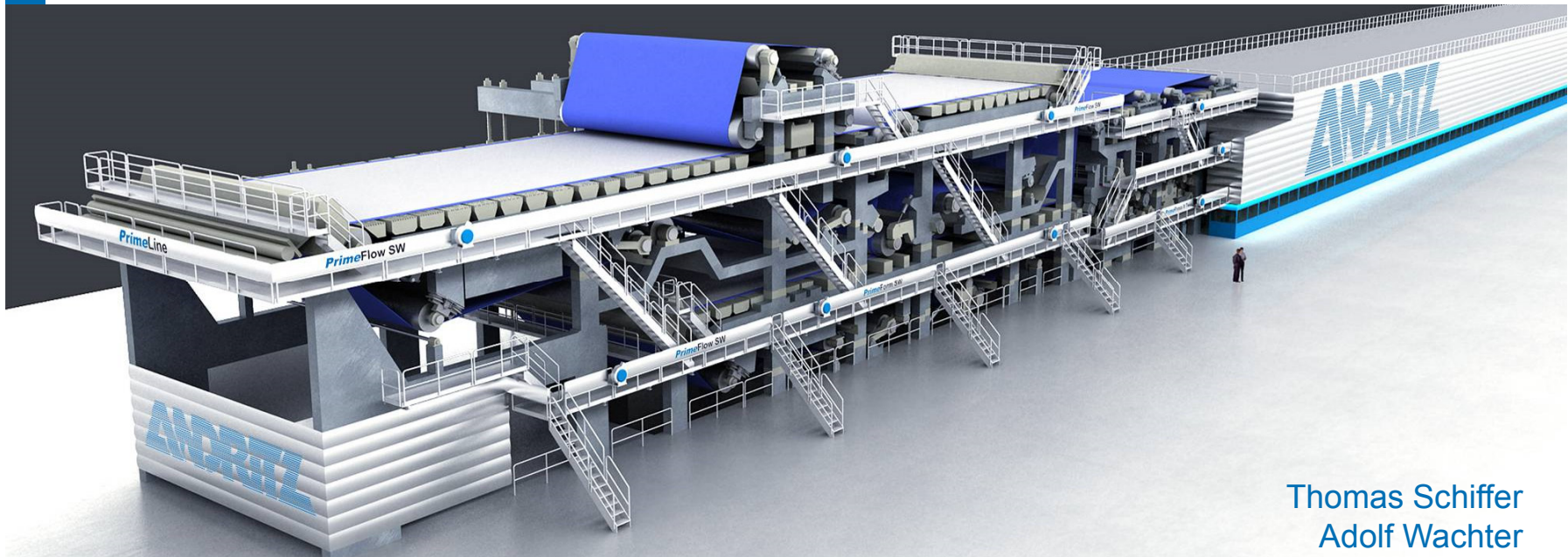


ANDRITZ

Pulp & Paper

ANDRITZ and Kama Karton LLC / Russia

First complete production line from wood log to board reel

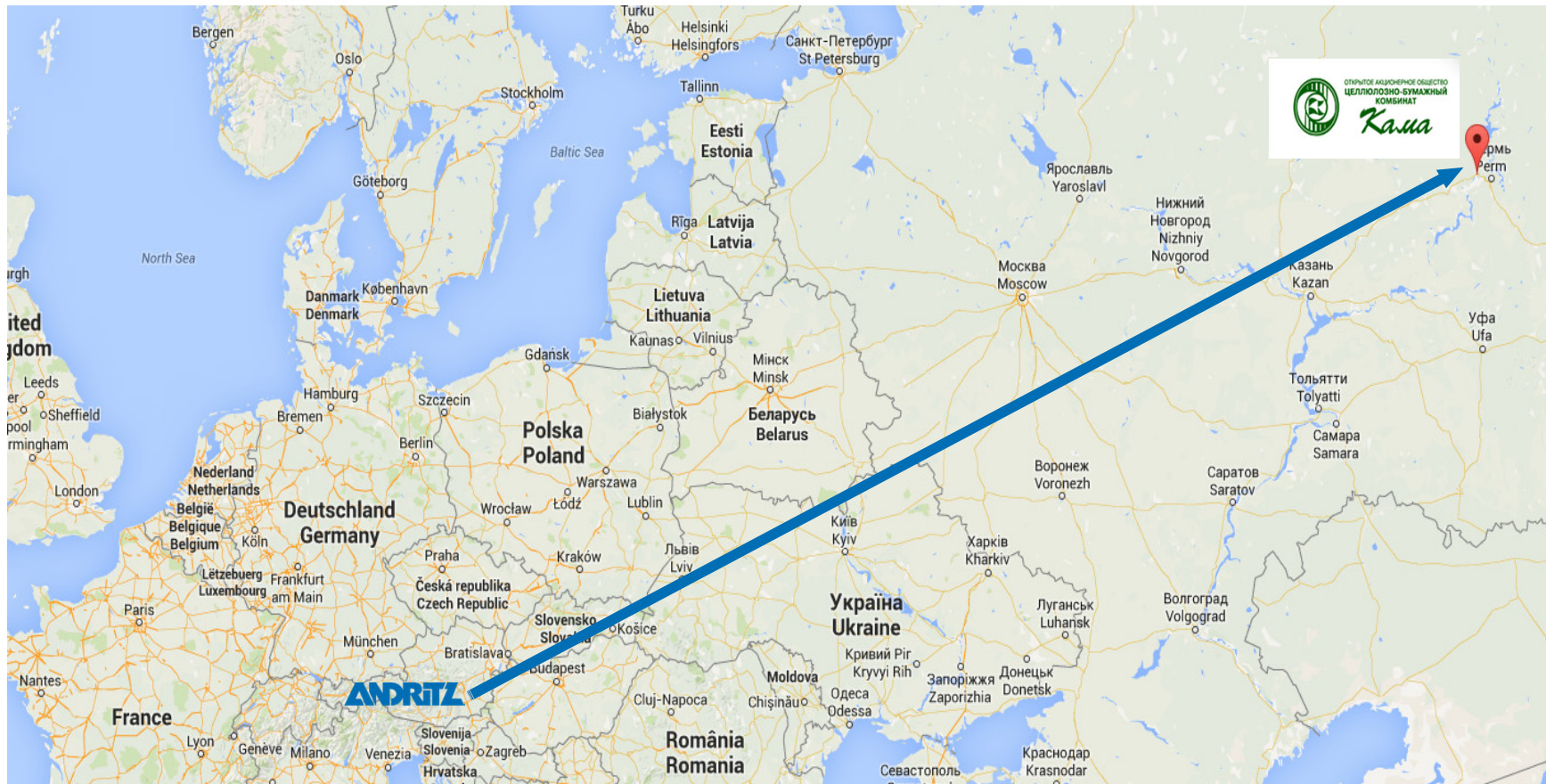


Thomas Schiffer
Adolf Wachter

Kama Karton LLC / Russia

Mill location

Distance Graz, Austria – Krasnokamsk, Russia: 3700 km @ the end of Europe



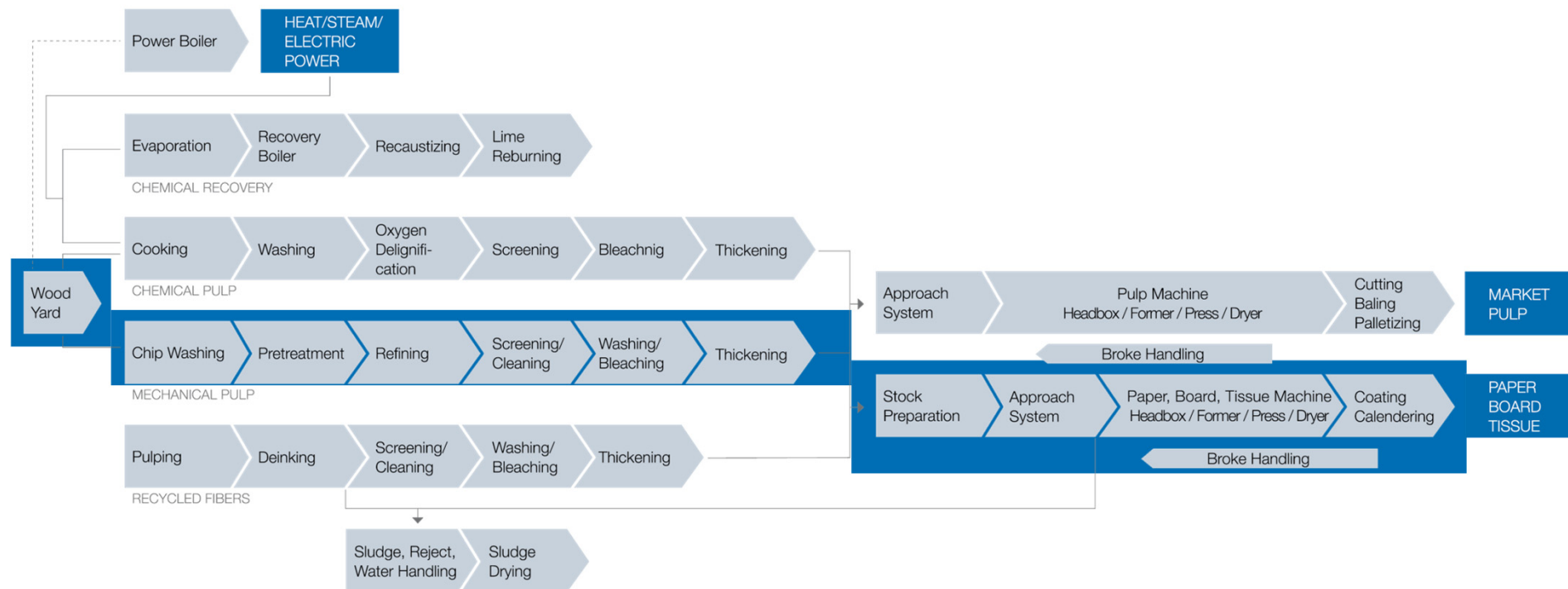
Kama Karton LLC / Russia

Mill location



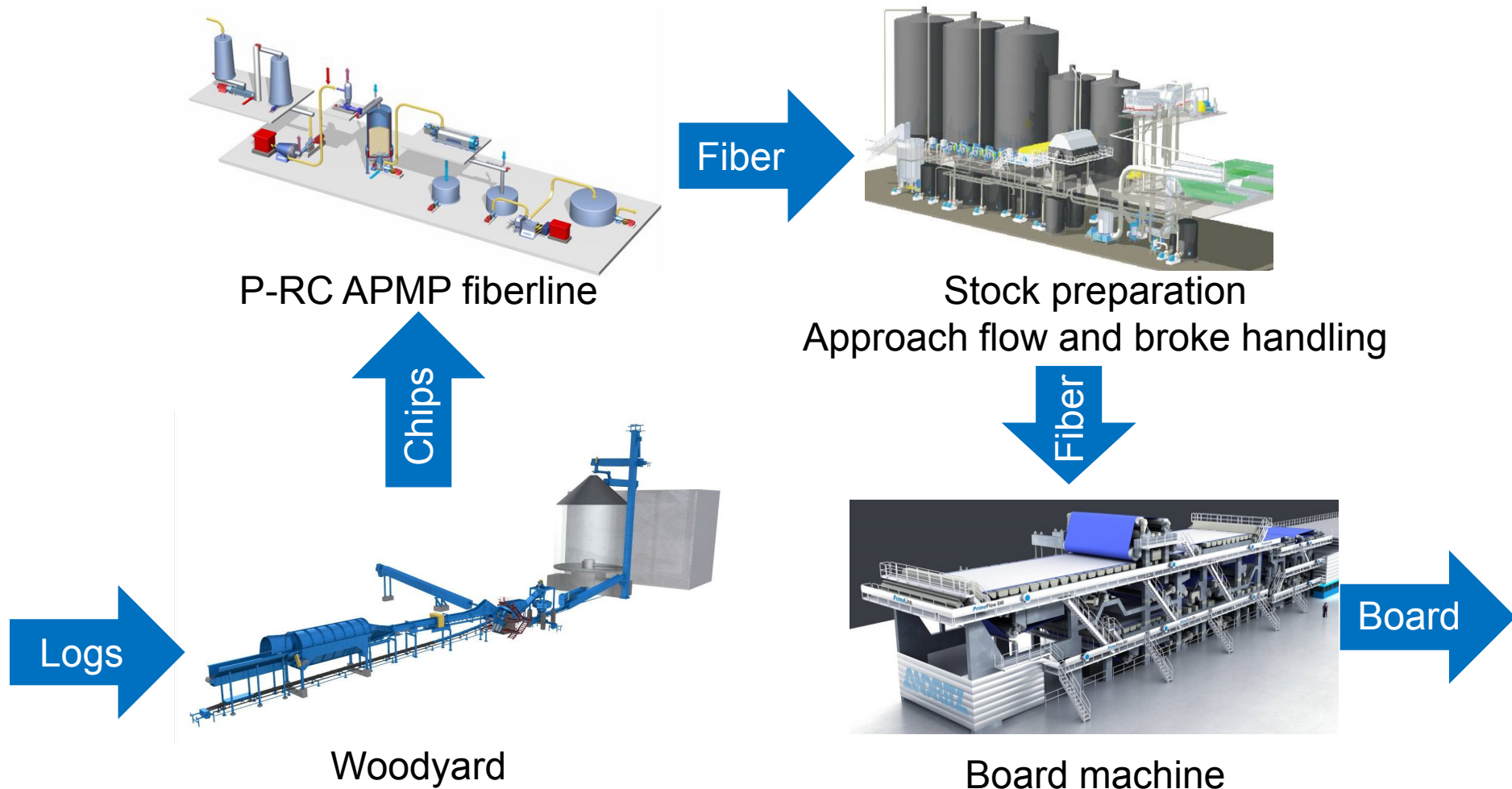
ANDRITZ Pulp & Paper

Full-line supplier in technologies and services



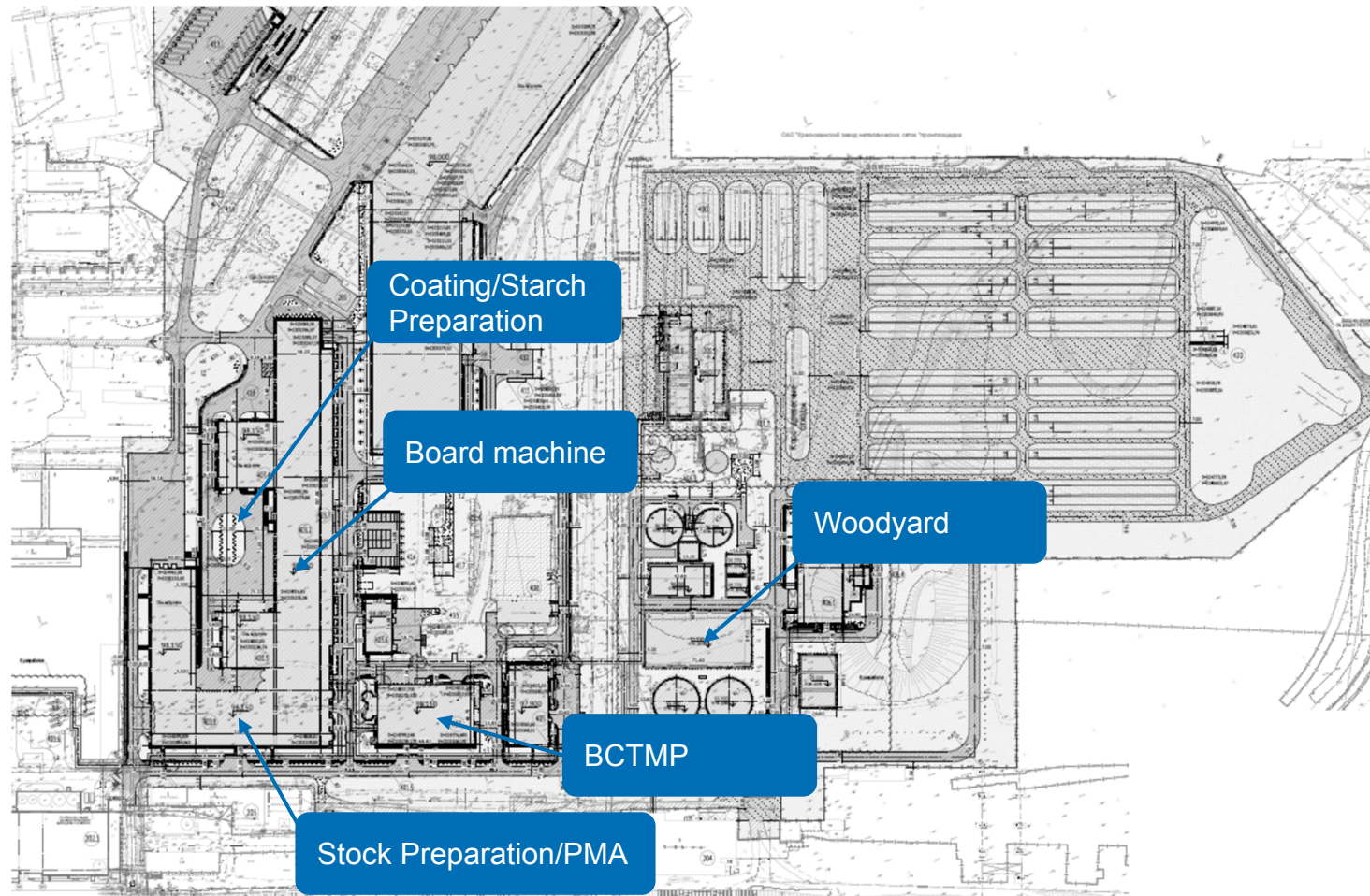
New production line for Folding Box Board (FBB)

Content of scope of supply



Kama Karton LLC / Russia

New production line layout for FBB – GC quality

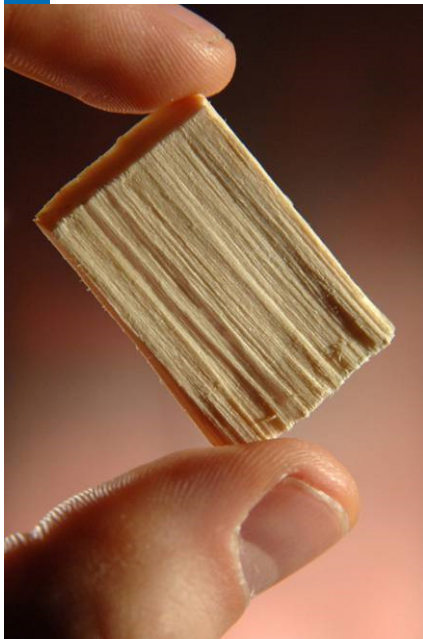


ANDRITZ

Pulp & Paper

Woodyard

The leading chipping process with constant quality

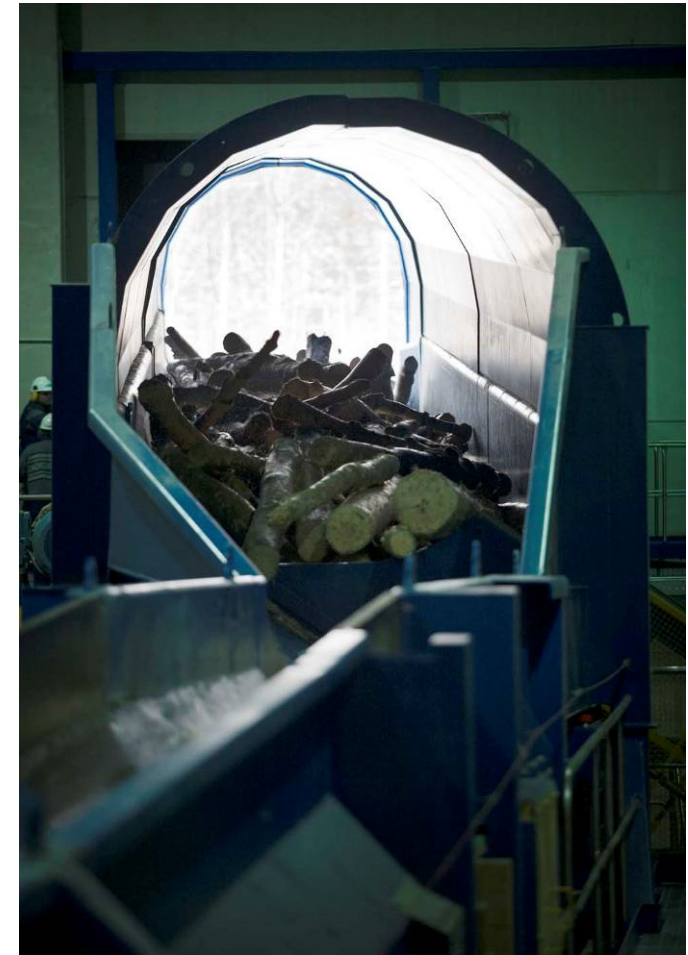


www.andritz.com

We accept the challenge!

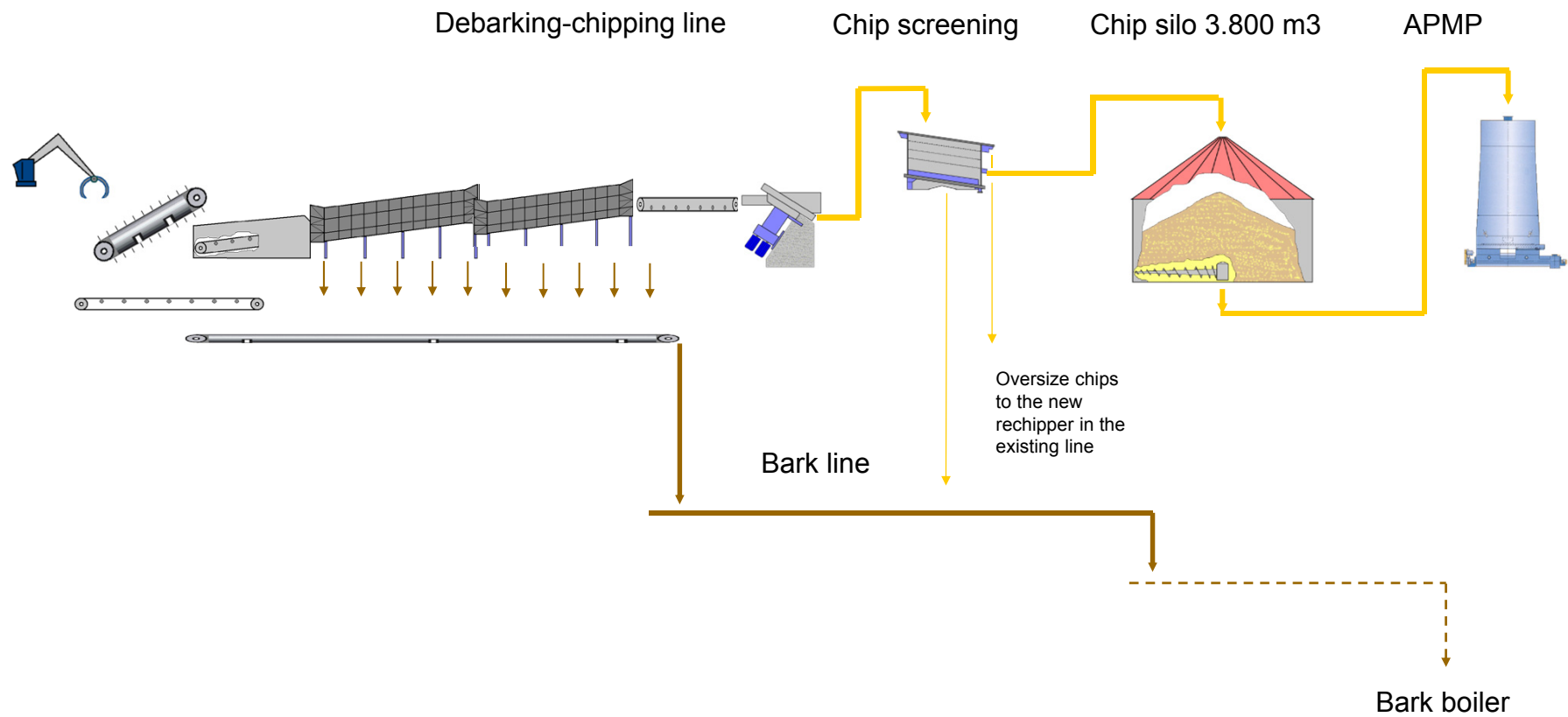
RotaBarker Line for cold climate – Estonian Cell

Typical debarking line with RotaBarker & HHQ-chipper



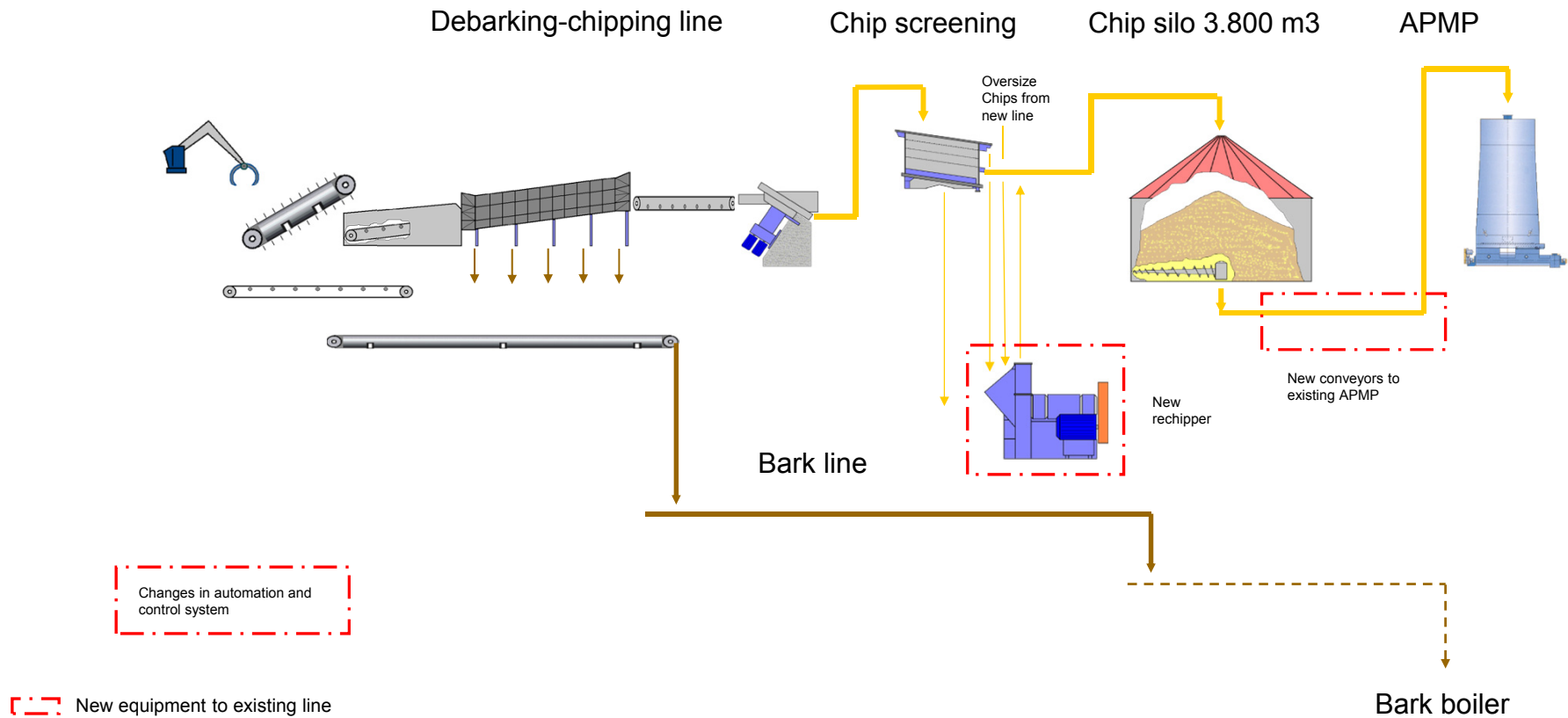
Woodyard

New chipping line



Woodyard

New equipment to the existing chipping line



ANDRITZ

Pulp & Paper

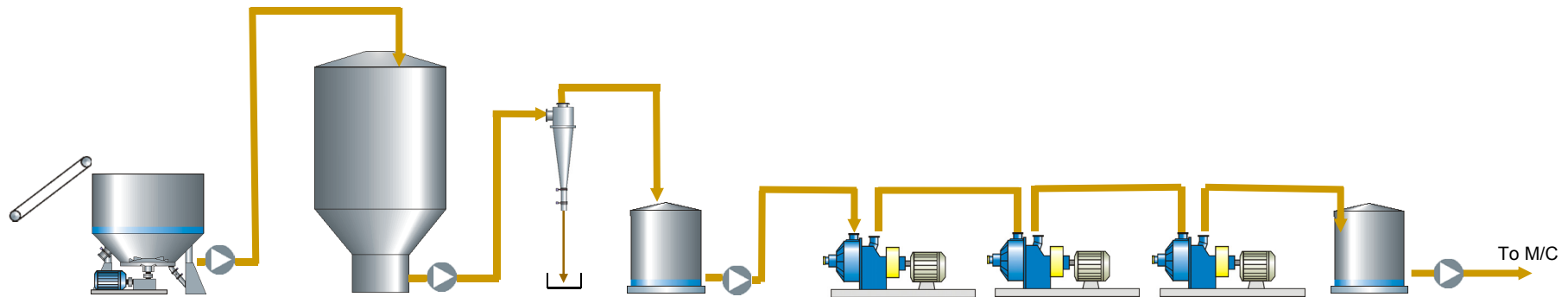
Stock preparation, approach flow & broke handling



Stock preparation line

NBKP Line

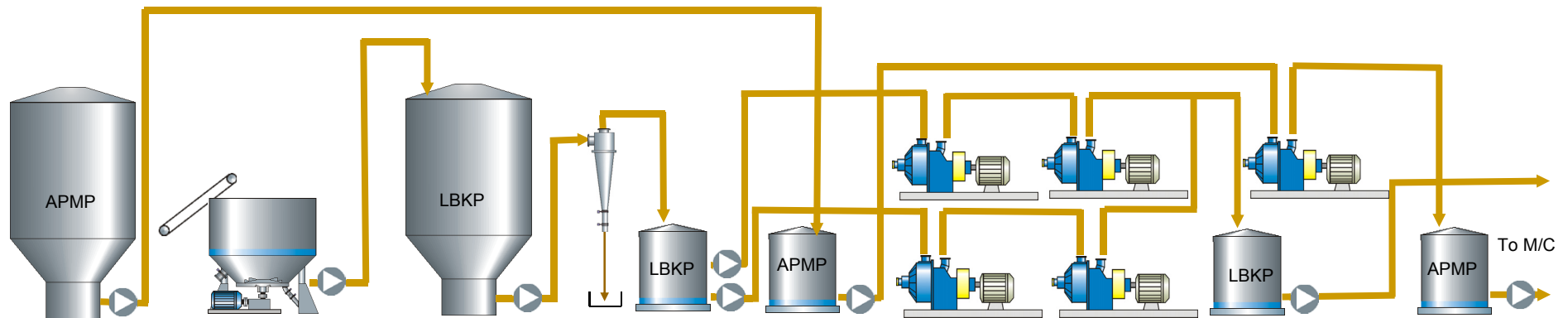
- One ANDRITZ FiberSolve FSV
- One ANDRITZ AhlCleaner for refiner protection
- Three ANDRITZ TwinFlo disc refiners



Stock preparation line

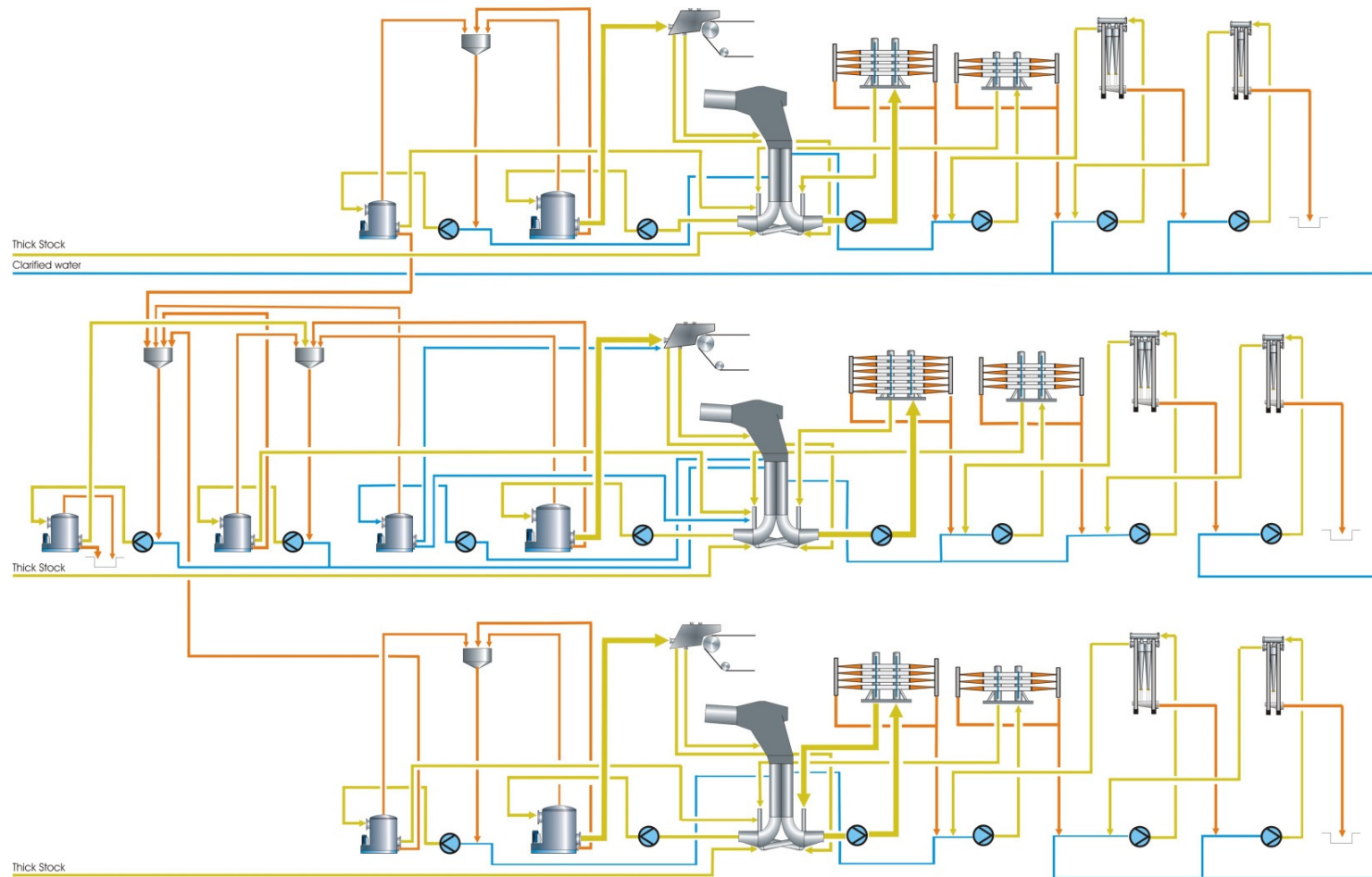
APMP/LBKP line

- One ANDRITZ FiberSolve FSV
- One ANDRITZ AhlCleaner for refiner protection
- Four ANDRITZ TwinFlo disc refiners for LBKP
- One ANDRITZ TwinFlo disc refiners for APMP



Approach flow system (PMA)

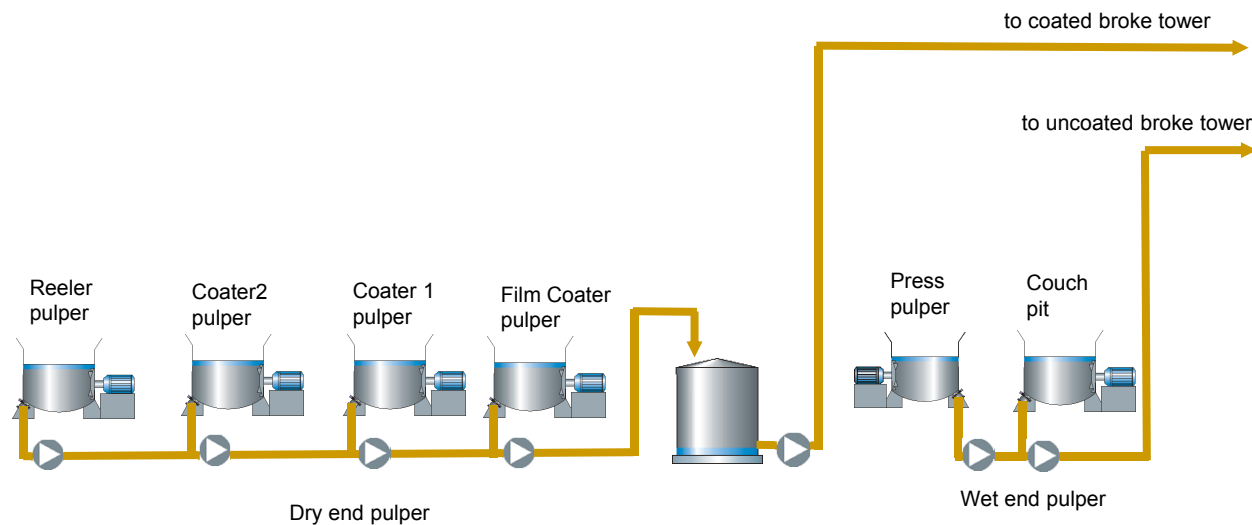
For 3 plies - top, filler and back ply



Broke handling

Under machine pulpers

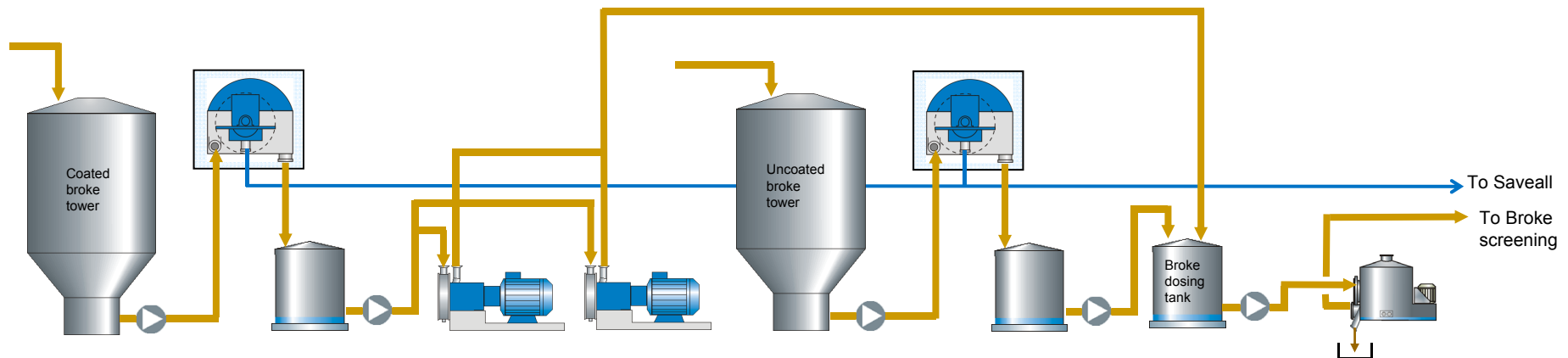
- Couch pit agitators 2x ANDRITZ TurboMix
- Five UTM pulper type ANDRITZ FibreSolve FSU



Broke handling

Broke preparation - design

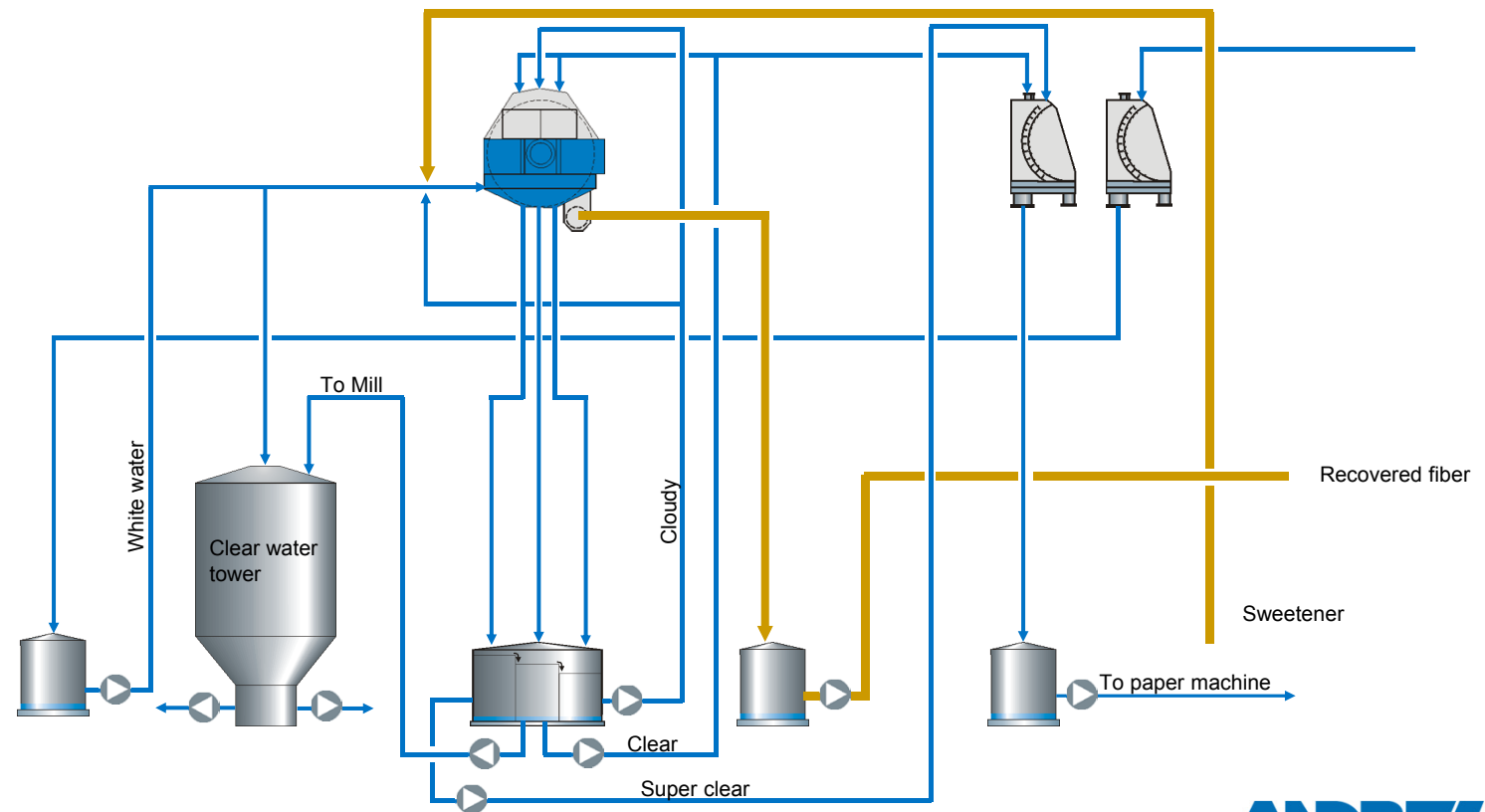
- Two ANDRITZ PRS thickener for coated and uncoated broke
- Two ANDRITZ Deflakers for coated broke
- One ANDRITZ ModuScreen for broke protection
- Broke screening three ANDRITZ ModusSreens and one ANDRITZ Deflaker



Fibre recovery system

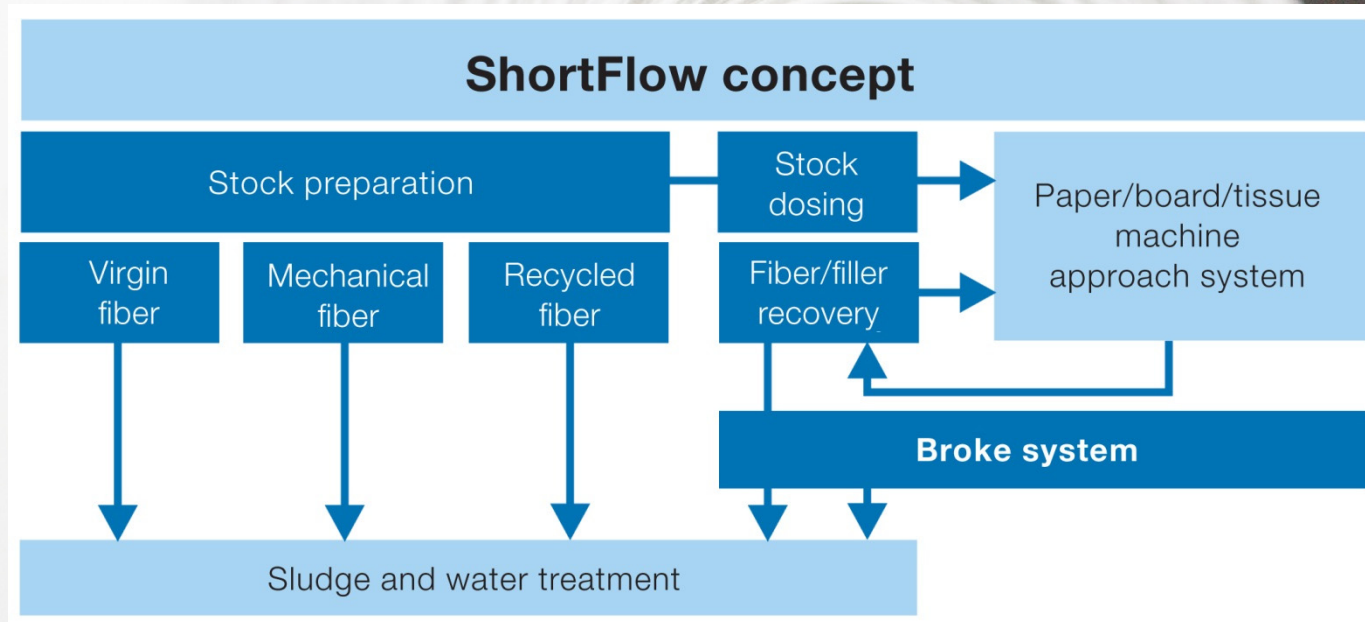
Design

- ANDRITZ SaveAll Disc filter
- Shower water Bow screen ANDRITZ MicraScreen
- Press water Bow screen ANDRITZ MicraScreen



ShortFlow concept

Plant concept



” *ANDRITZ ShortFlow concept contains overall process solutions – from bale pulping to the paper machine headbox.*

ShortFlow concept

For cost efficiency - summary

ShortFlow concept at a glance

- Minimized number of equipment and storage volume
- High flexibility concerning grade and color changes
- Compact layout: combination of machine chest and blend chest to a new module
- High grade reproducibility and short start-up times due to high level control philosophy

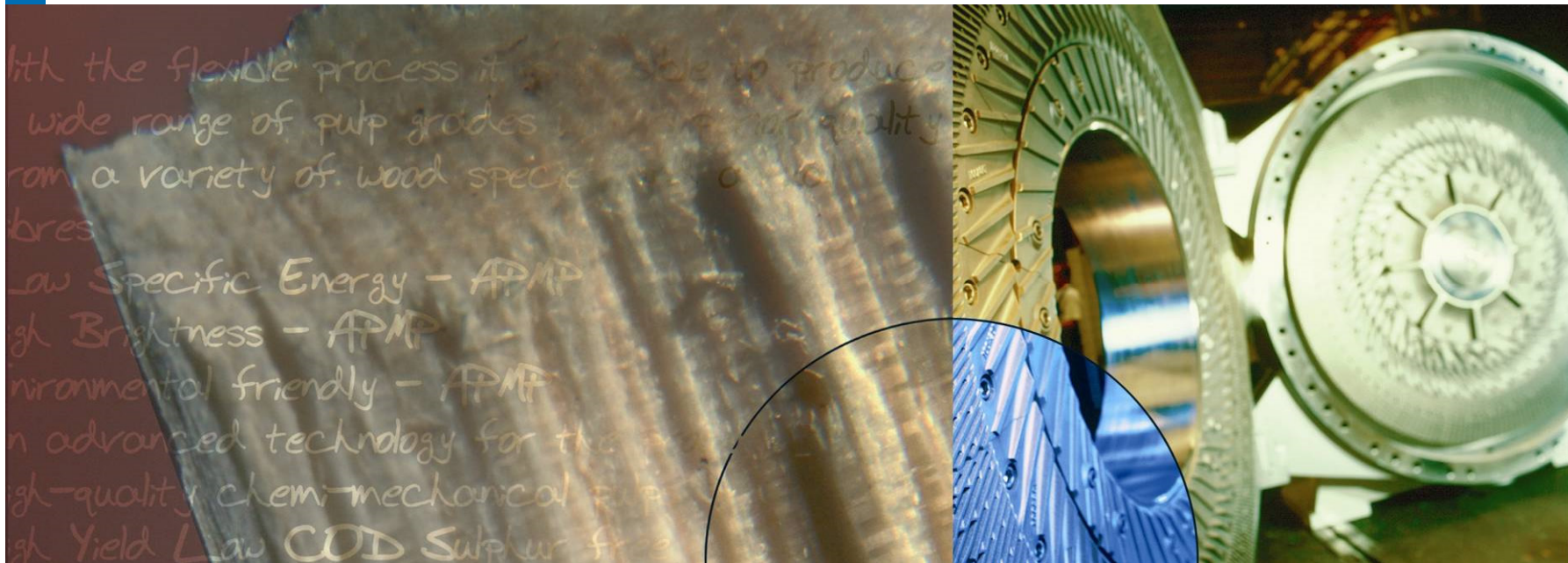


ANDRITZ

Pulp & Paper

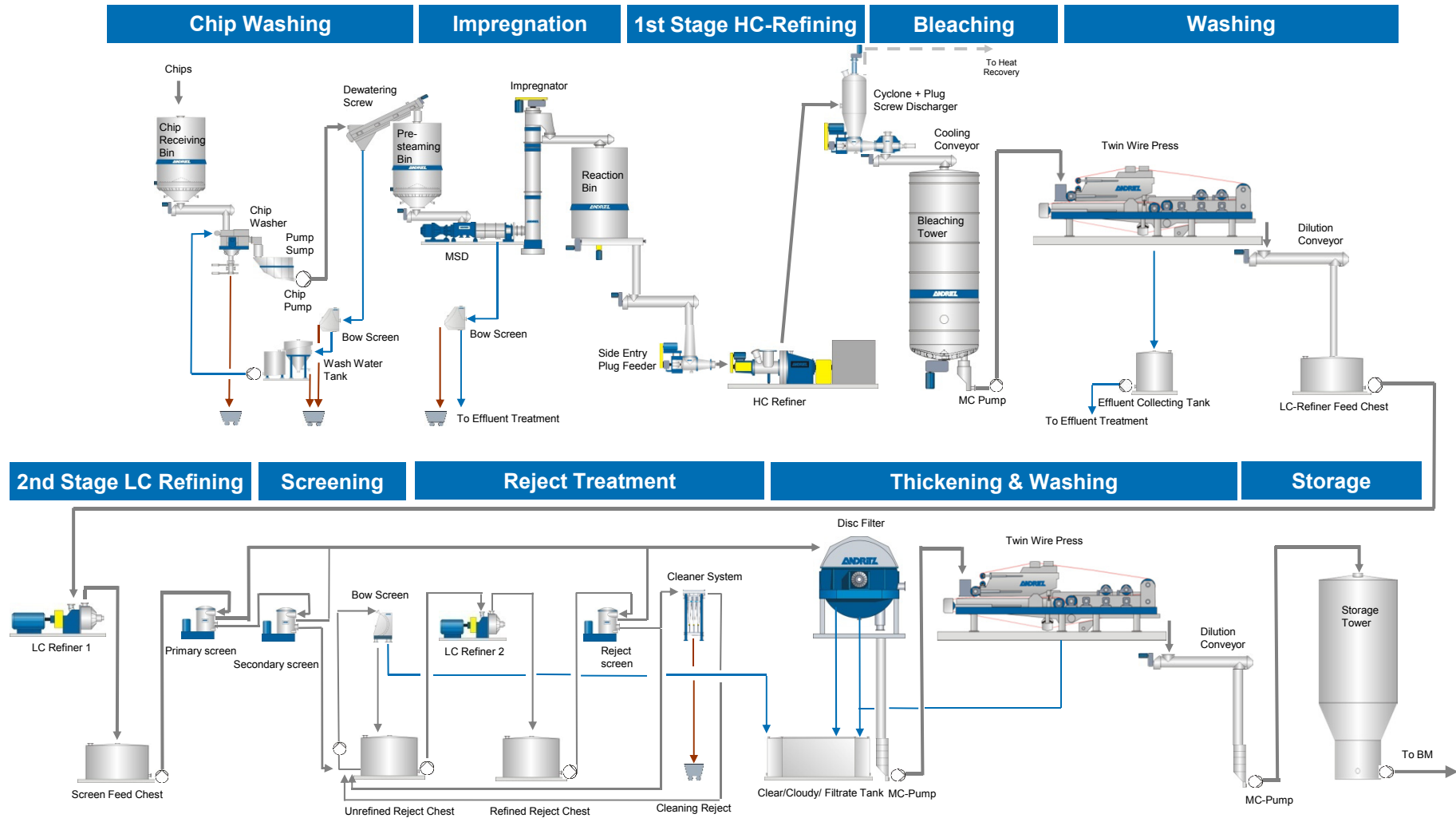
P-RC APMP fiberline

The leading hardwood mechanical pulping process



BCTMP

Basic flow sheet, 395admt/d, board grade



P-RC APMP (Pre-conditioning Refiner Chemical Alkaline Peroxide Mechanical Pulp)

Why ANDRITZ equipment

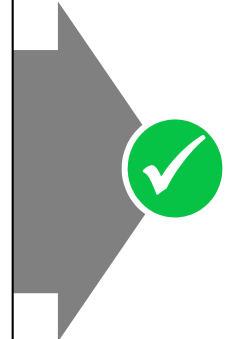
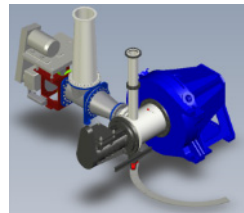
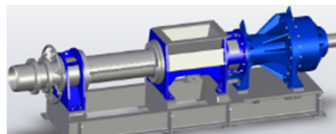


Highest pulp quality at minimum energy demand

- **ANDRITZ Impressafiner** – most efficient
- **ANDRITZ HC Refiner** – lowest shives
- **ANDRITZ Bleach Tower** – even retention time
- **ANDRITZ Screw Press** – highest dryness
- **ANDRITZ LC Refiner** – lowest energy consumption



All key equipment made by ANDRITZ



P-RC APMP

Why ANDRITZ P-RC APMP technology

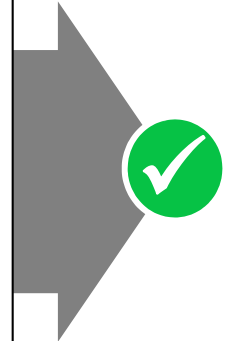
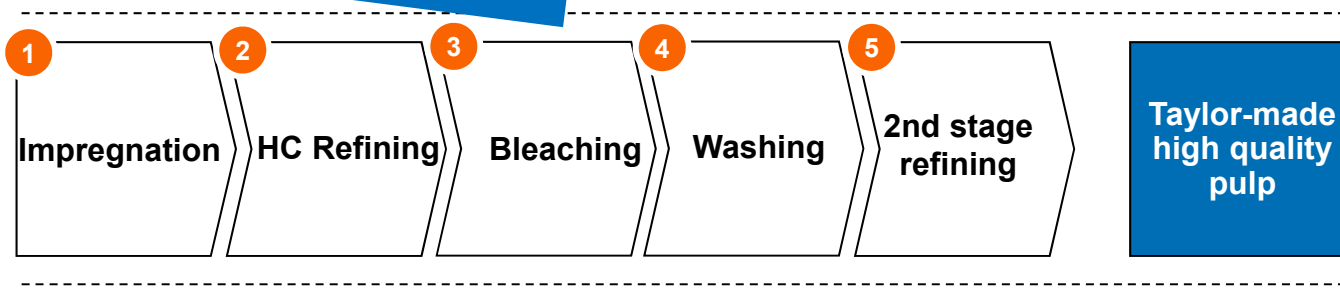


Patented, reliable and proven

- There is an ANDRITZ P-RC APMP Plant for every type of pulp, wood species, brightness and capacity – MARKET LEADER



Experience from more than 30 successful P-RC APMP installations

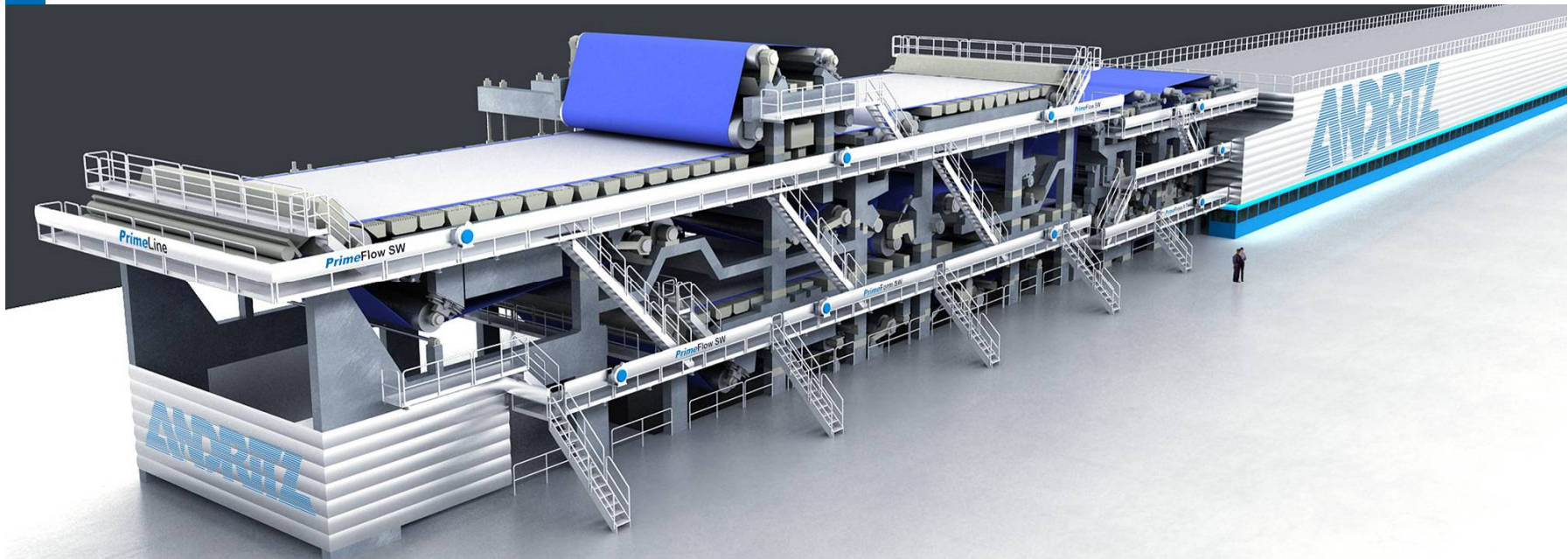


ANDRITZ

Pulp & Paper

Board machine

Europe's leading technology in multi-layer productions



www.andritz.com

We accept the challenge!

Board machine from headbox to winder

Design data for 220.000 t/a

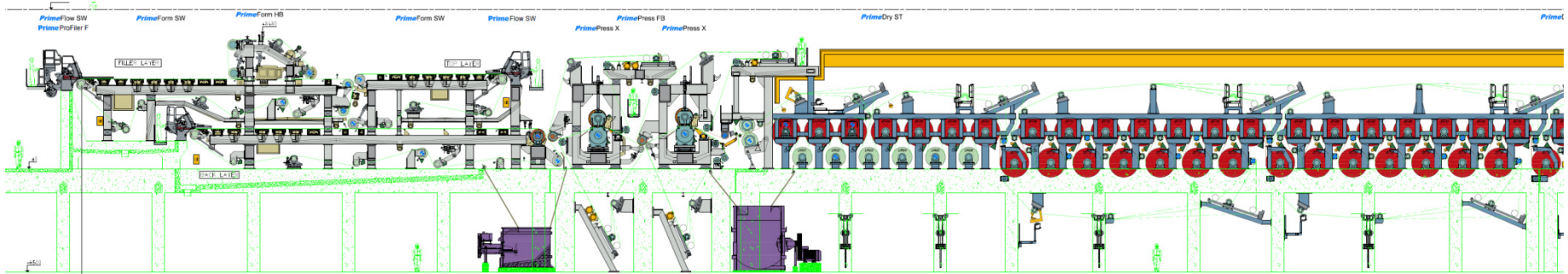
Basic data

Paper grade		FBB (GC1 and GC2 quality)
Basis weight range		200 – 350 g/m²
Raw materials		LPKP, NBKP, BCTMP (Birch/Aspen)
Number of Layers / raw material split	Top Layer	50/50 LPKP, NBKP
	Filler Layer	80 % BCTMP / 20% Broke
	Back Layer	50/50 LPKP, NBKP
Wire width		4300 mm
Working width at reel		3750 mm
Design speed		800 m/min
Production speed		650 m/min

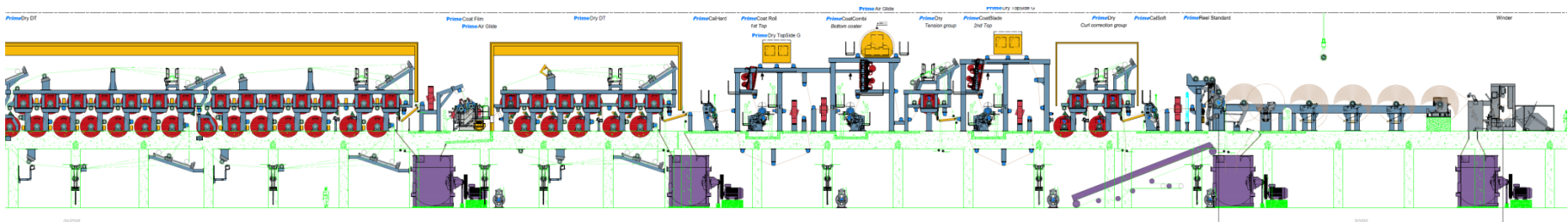
Board machine from headbox to winder

Overall length of 230 m

- 3 layer wire section with hybrid former
- Press section with two shoe press and one offset press
- Pre dryer section with 63 drying cylinders



- Film press with 1st post dryer section with 11 drying cylinders
- One hard nip calender and coating section with 3 coating heads
- 2nd post dryer section with 4 cylinders and soft nip calender, pope reeler and slitter rewinder



Board machine

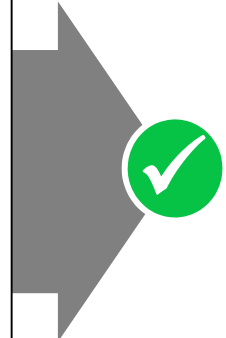
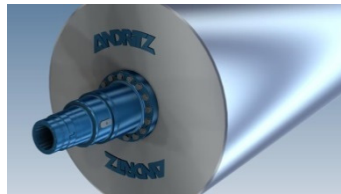
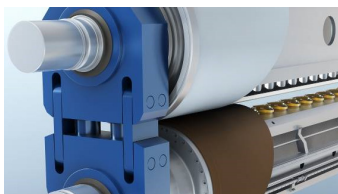
Why ANDRITZ equipment

Highest board quality at minimum energy demand

- **ANDRITZ Headbox** – best profiles
- **ANDRITZ Shoe press** – highest dryness
- **ANDRITZ Steel dryers** – lowest energy consumption
- **ANDRITZ Calender** – best smoothness
- **ANDRITZ Coater** – homogeneous coating properties



All key equipment made by ANDRITZ



PrimeDry steel cylinder

Completely made of steel

The material is they key – comparison steel vs. cast:

Characteristics	Steel vs. cast	Improvement
Material strength and elasticity	+++	approx. 40% higher
Cylinder weight	+	approx. 20% less
Heat transmission coefficient = better drying performance	+	7% better
Energy savings	++	% depends on process design
Mechanical design at web edges	++	approx. 15 cm on each side



The feasibility calculations shown herein are for indicative and illustrative purposes only and shall in no event represent binding obligations to ANDRITZ.



Legal Disclaimer

All data, information, statements, photographs, and graphic illustrations contained in this presentation are without any obligation to the publisher and raise no liabilities to ANDRITZ AG or any affiliated companies, nor shall the contents in this presentation form part of any sales contracts, which may be concluded between ANDRITZ GROUP companies and purchasers of equipment and/or systems referred to herein.

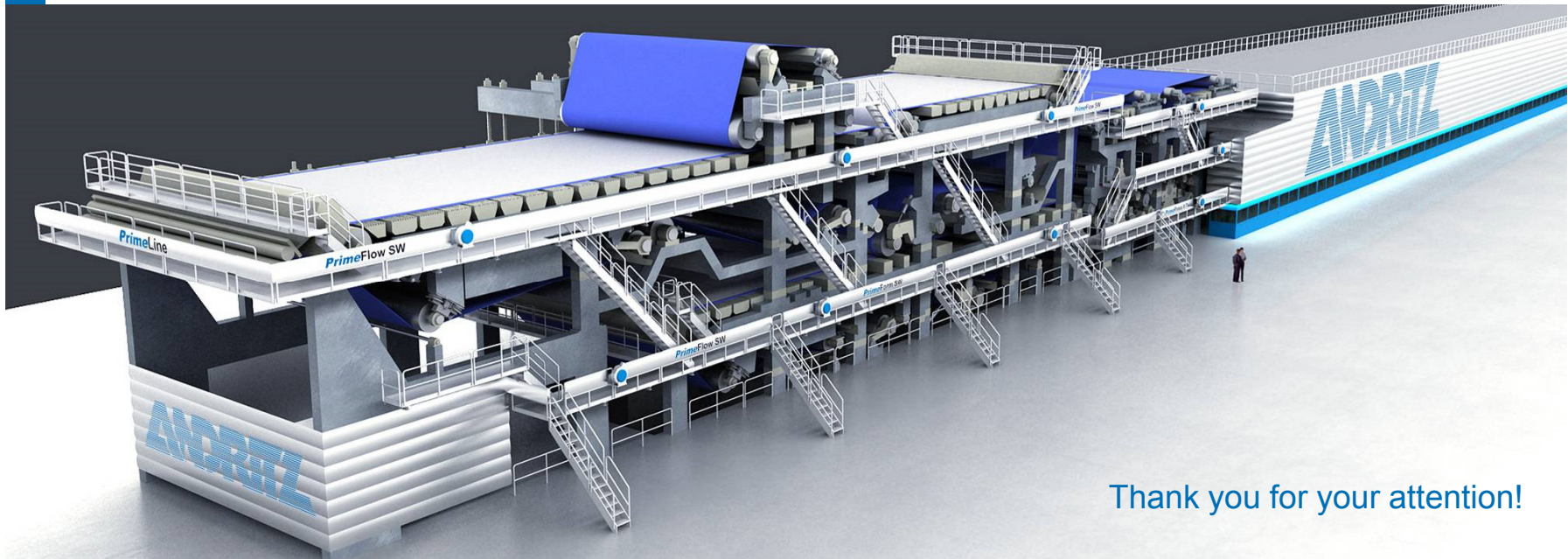
© ANDRITZ AG 2017. All rights reserved. No part of this copyrighted work may be reproduced, modified or distributed in any form or by any means, or stored in any database or retrieval system, without the prior written permission of ANDRITZ AG or its affiliates. Any such unauthorized use for any purpose is a violation of the relevant copyright laws.

ANDRITZ

Pulp & Paper

ANDRITZ and Kama Karton LLC / Russia

First complete production line from wood log to board reel



Thank you for your attention!