



DITP BLED SYMPOSIUM 2017

The Best in Class Mill Operations

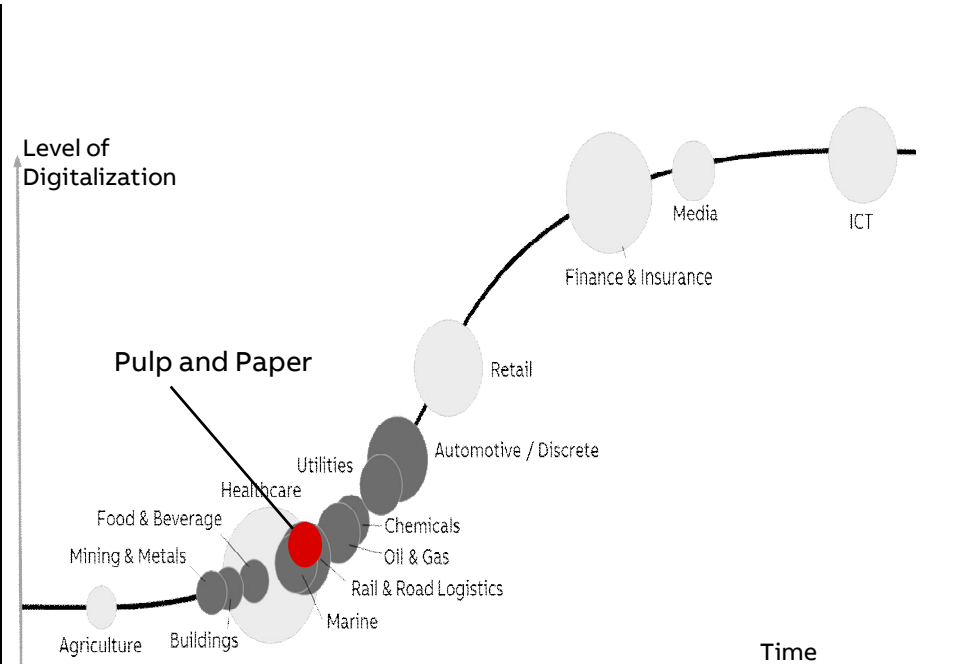
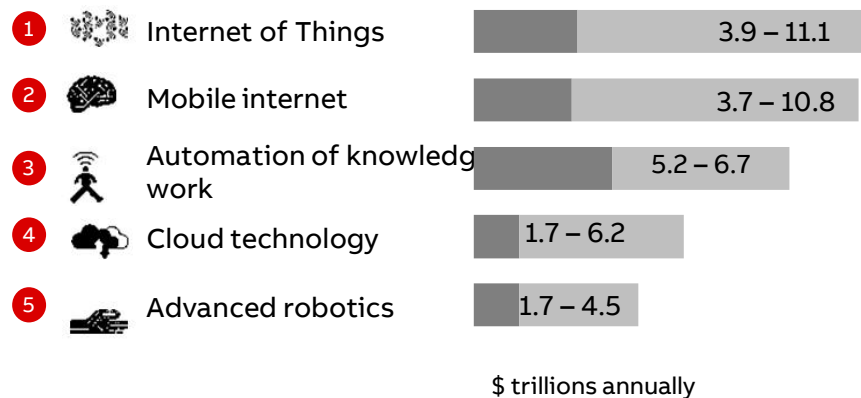
Mikko Jalava, Sales Director CPM



Industrial markets poised for massive value migration

A \$4 – 11 trillion digital opportunity by 2025

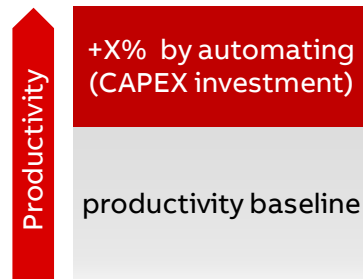
Economic impact of most significant technologies



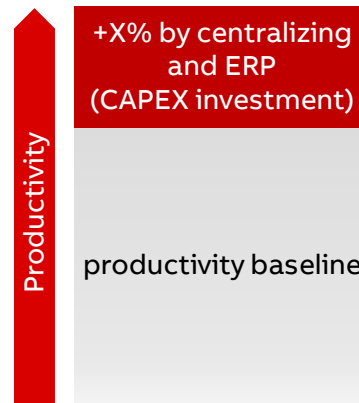
Why a new way of working?

CAPEX – based productivity levers are exhausted. Collaboration is the step to next level productivity.

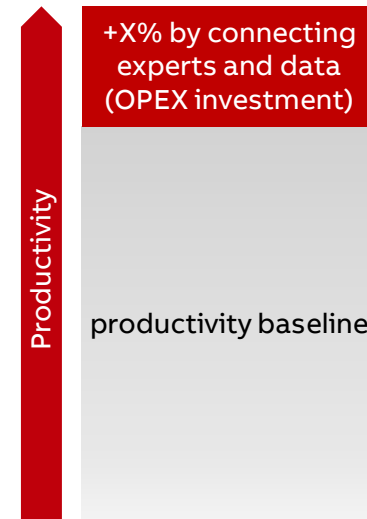
Step 1: Automate



Step 2: Centralize

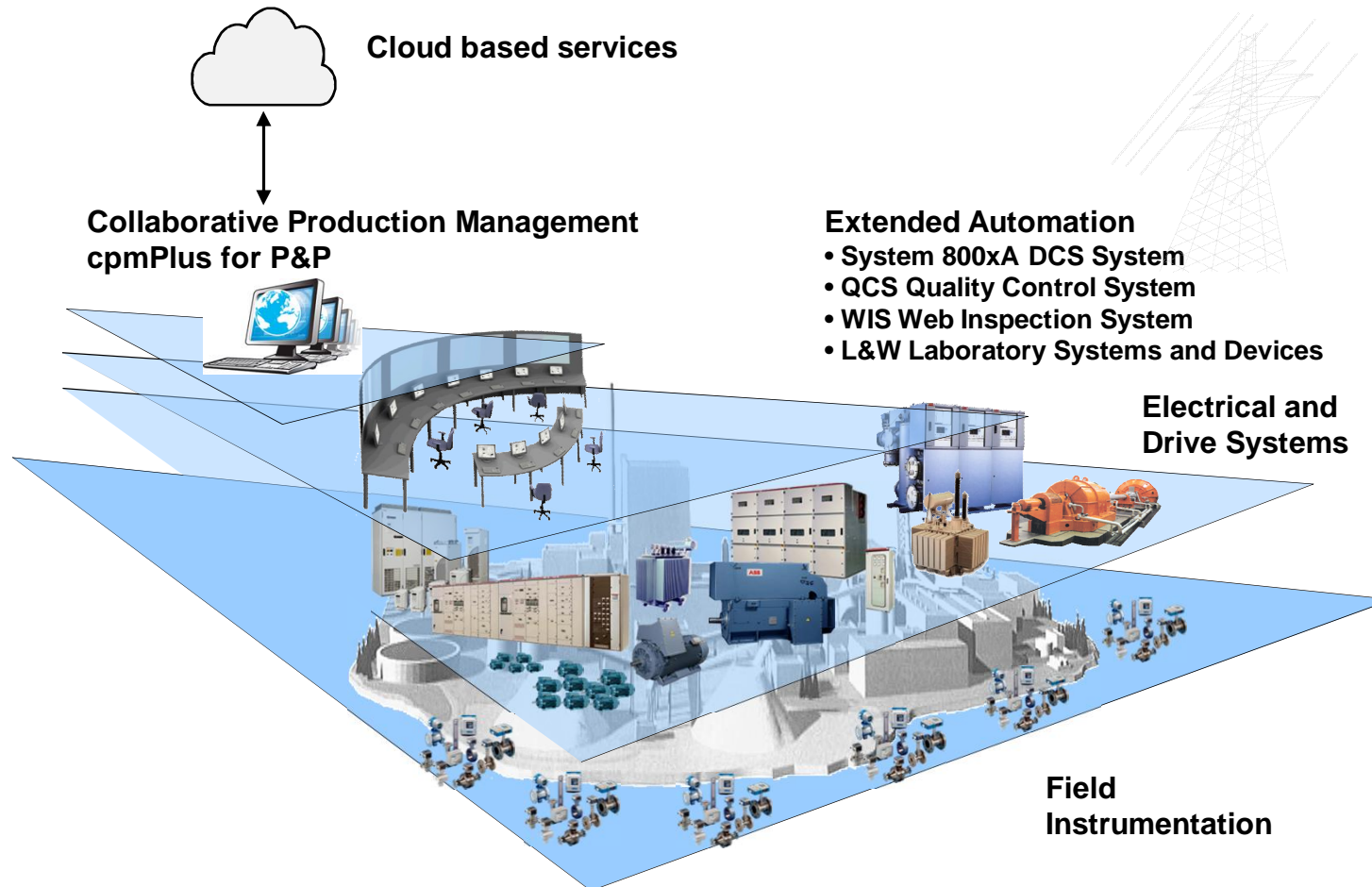


Step 3: Collaborate



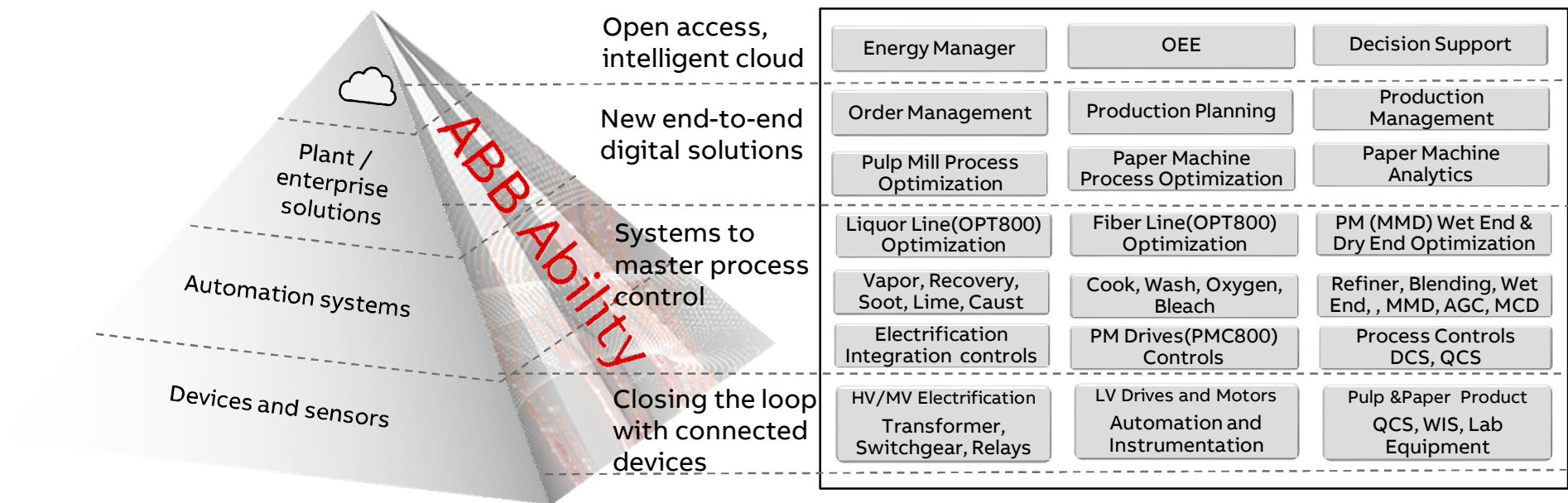
Collaborative Production Management for P&P

Umbrella for ABB field instruments



Unlocking the ABB potential in digital

ABB Ability™: Pulp and Paper digital solutions



cpmPlus Order Management

Agility through full integration

Key Features:

- Order entry
- Capacity and warehouse level checks
- Order confirmation, invoicing and complaint handling
- Automatically generates order confirmations, sales documents, invoices etc.

Key Customer Values:

- Complete integration with other cpmPlus products offer full visibility to planning, production, delivery, warehousing and delivery planning à eliminates need for data exchange interfaces
- Capacity check & profitability checks for the sales personnel

The screenshot displays the cpmPlus Order Management software interface. It features a top navigation bar with tabs for 'General', 'Delivery', 'Invoicing', 'Status', and 'Comments'. The main area is divided into several sections: 'Order Header' with fields for Order No., Date, and Status; 'Order Details' with fields for Product, Quantity, and Unit; 'Order History' with a table of previous orders; and 'Order Summary' with a table of current orders. The interface is designed for efficient order management and data entry.



Country	2015/01	2015/02	2015/03	2015/04	2015/05	2015/06	2015/07	2015/08	2015/09	2015/10	2015/11	2015/12	Total
FI	80	85	85	85	85	85	85	85	85	85	85	85	1,020
FR	25	35	35	35	35	35	35	35	35	35	35	35	380
IT	140	140	140	210	210	210	140	140	230	210	190	140	2,100
RU	75	35	35	35	35	35	35	35	45	45	150	25	515
US	45	45	45	45	45	45	45	45	45	45	45	45	544
	370	329	320	390	390	390	320	320	430	410	329	345	4,529

Product	Customer	1	2	3	4	5
BK-G060	ITHERALD					820.00
BK-R060	ITHERALD		800.00	825.00	850.00	850.00
NW-W050	ITHERALD					
NW-W055	ITHERALD	525.00	550.00	550.00	575.00	550.00
Average		525.00	640.42	649.03	658.64	733.14

cpmPlus Order Management

Order Entry

Enter sales office and customer and default data is updated automatically

Order line display

Order items are selected from ready made lists with default values

ATP = available to promise
CTP = capacity to promise
ATP/CTP allow to see available stock, production capacity

Order Header

Order: 000002080890 Trading: ☐ Currency: EUR Customer order: ☐ Sales Status: OR Ordered OK

Sales Office: FI Sales agent: MM Customer: SANOMA Sanoma WSOY

P.O.: Contact: Consignee: SANOMAVR Sanoma WSOY Varkauden paino

End user: Country: FI FINLAND

Type: CM Payment term: 30DN 30 days net

Priceday: OD Ordered date: 12/04/2017 15:25 demo

Invoicing point: MDD Mill delivery

Invoice level: DN Delivery Note

Delivery term: DDU FIVARKAU

Updated: 12/04/2017 15:25 demo

Order Items

Item	Product	Article	R/S	Width	Dia/Len	Co/Pa	Tons	Pkg	Price / ton	PM	Exmill	Delivery	F/S	St	R

Order Item

Order item: / St: OR / OR

Type: CM F/S: F

Roll/Sheet: R Class: A

Product: BK-G060

Article: BK-G060R2

Size: 1300 x 1250

Sales name: MF uncoated mechanical paper 52 gsm

Ordered: G

Ord. net-net:

Ordered units:

Roll **Sheets** **Tissue** **Pallet** **Bale**

Core: 0076 Standard core 76 m

Make to: D Diameter: 1225 - 1275

Diameter: 1250

Length: 10979 10541 - 11426

Rolls/package: 1 min 1 Target

Roll weight: 856 Maximum 1650

Middle roll: A Max edge

Wrapping code: W2 Neutral Wrap

Packing type:

Details **Delivery** **Labeling** **Price** **Misc**

PM: PM1 Fixed Wire side: 0

Fin. Mach: PM1 Fixed Tolerance: NOR

Ordered: G 0 0 - 0

Delivery: / / : ATP

RFL: / / : CTP

Exmill: / / :

Closing: / / :

Release: / / :

Quota group:

Apply New Cancel

cpmPlus Production Planning Optimized production plans

Key Features:

Scheduling tool:

- Used for production scheduling
- Automatic or manual block scheduling
- Capacity tools, simulation possibility, production time calculations etc.

Trimming tool:

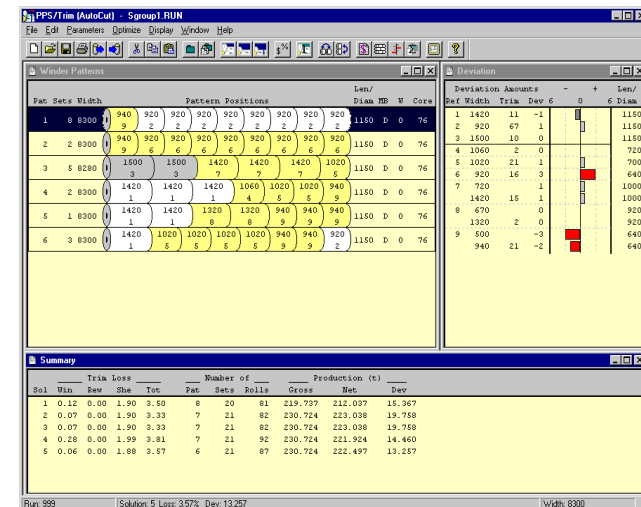
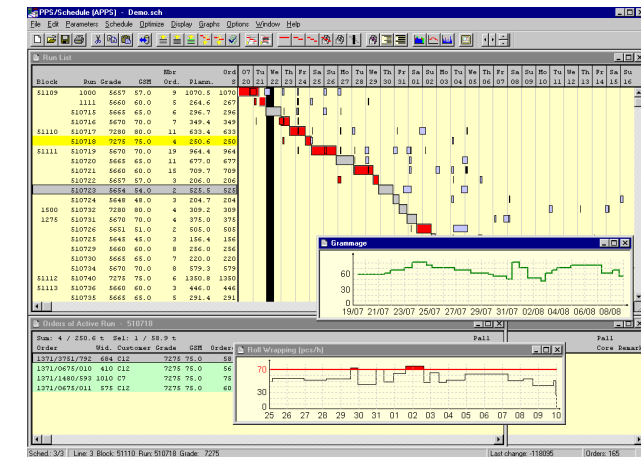
- Trimming tool is used to create optimised production runs at winders à 50% less trim waste compared to manual trimming

Re-trimming tool:

- In a case of quality defect re-trimming tool can be used to remove quality defect with minimum amount of waste.

Key Customer Values:

- Minimizes delays and deviations from ordered quantities
- Minimizes grade change costs and trim losses in all production phases
- Minimizes inventories, maximizes value of production
- Multimill planning and optimisation, Profitable to Promise tool (searches most economic mill to produce)
- Cost function shows economic impact of schedule change



cpmPlus Production Planning Scheduling tool

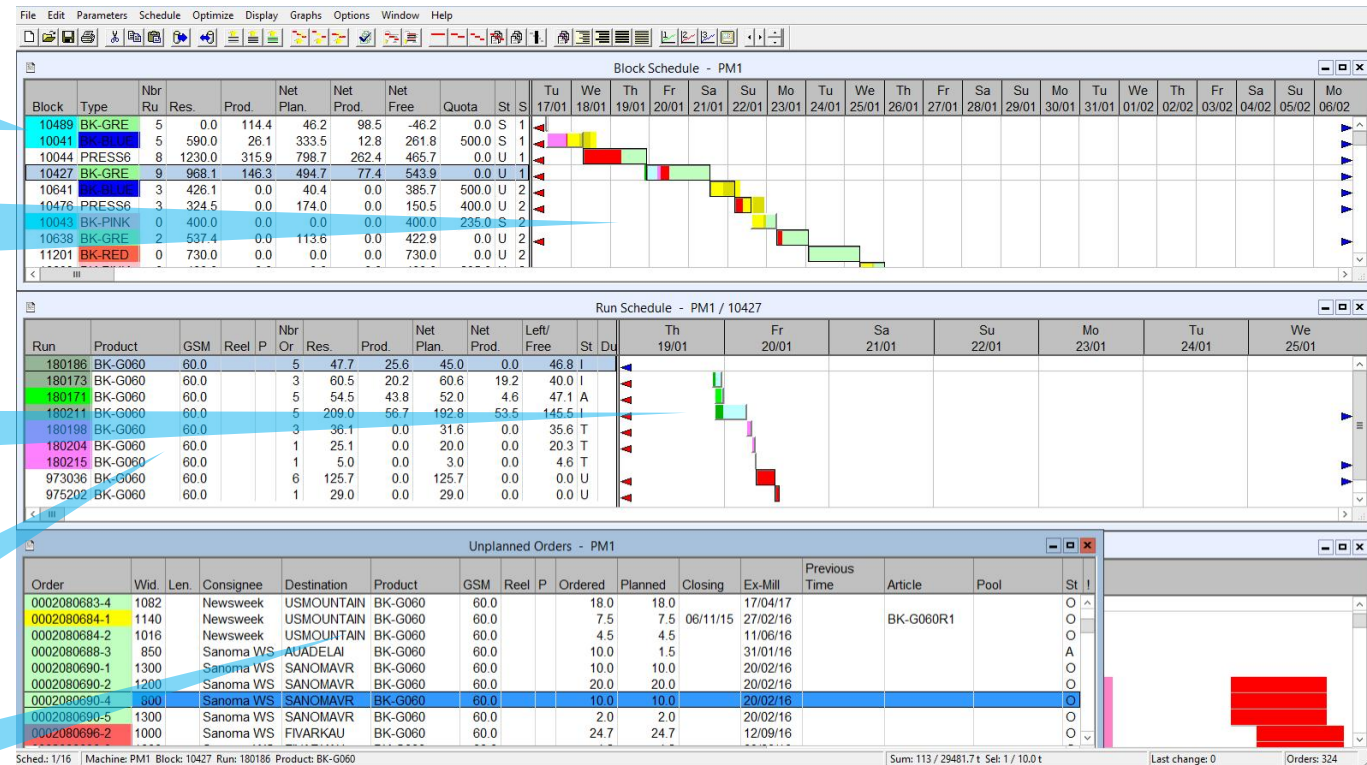
Status of planned orders and availability of production blocks

Color-coded blocks indicate free capacity, over production, late orders etc.

Run schedule of papermachine displayed in color-coded blocks

Status of each planned orders

Unplanned orders waiting to be scheduled



cpmPlus Production Planning Trimming tool

Jumbo roll trimming
plan per
customer/sheet size
etc.

PPS/Trim (AutoCut) - Sgroup1.RUN

File Edit Parameters Optimize Display Window Help

Winder Patterns

Pat	Sets	Width	Pattern Positions										Len/ Diam	MB	W	Core
1	8	8300	940	920	920	920	920	920	920	920	920	920	1150	D	0	76
2	2	8300	940	920	920	920	920	920	920	920	920	920	1150	D	0	76
3	5	8280	1500	1500	1420	1420	1420	1420	1020	1020	1020	940	1150	D	0	76
4	2	8300	1420	1420	1420	1060	1020	1020	940	940	940	940	1150	D	0	76
5	1	8300	1420	1420	1320	1320	940	940	940	940	940	940	1150	D	0	76
6	3	8300	1420	1020	1020	1020	1020	940	940	940	940	940	1150	D	0	76

Deviation

Ref	Width	Trim	Dev	6	Len/ 6 Diam
1	1420	11	-1		1150
2	920	67	1		1150
3	1500	10	0		1150
4	1060	2	0		720
5	1020	21	1		700
6	920	16	3		640
7	720	1			1000
8	670	0			920
9	500	-3			640
940	21	-2			640

Summary

Sol	Win	Trim Loss			Number of			Production (t)		
		Rev	She	Tot	Pat	Sets	Rolls	Gross	Net	Dev
1	0.12	0.00	1.90	3.50	8	20	81	219.737	212.037	15.367
2	0.07	0.00	1.90	3.33	7	21	82	230.724	223.038	19.758
3	0.07	0.00	1.90	3.33	7	21	82	230.724	223.038	19.758
4	0.28	0.00	1.99	3.81	7	21	92	230.724	221.924	14.460
5	0.06	0.00	1.88	3.57	6	21	87	230.724	222.497	13.257

Run: 999 Solution: 5 Loss: 3.57% Dev: 13.257 Width: 8300

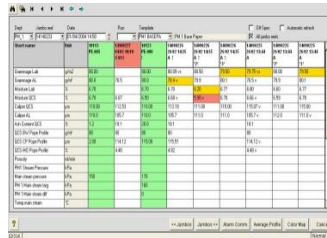
Over-
/underproduction
per roll size

Trim loss per
percentage, money
or tons is indicated

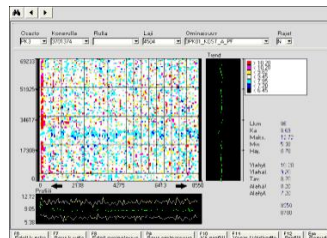
Trim optimiser
calculates different
trimming solutions

cpmPlus Quality Management

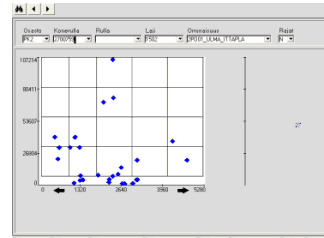
Comprehensive quality control



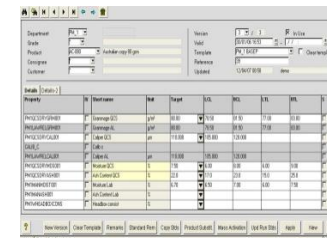
Laboratory Data



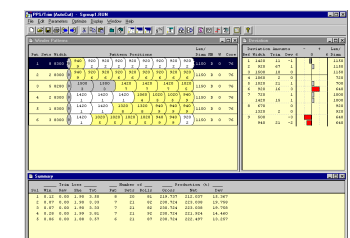
QCS Data



WIS Data

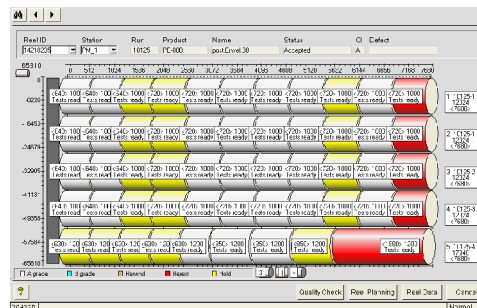


Product specification/
Customer requirements



Optimized Trim
(assume uniform quality)

Automatic re-classification based on
measured quality and customer
requirements



White = A-quality
Yellow = B-quality
Red = Reject

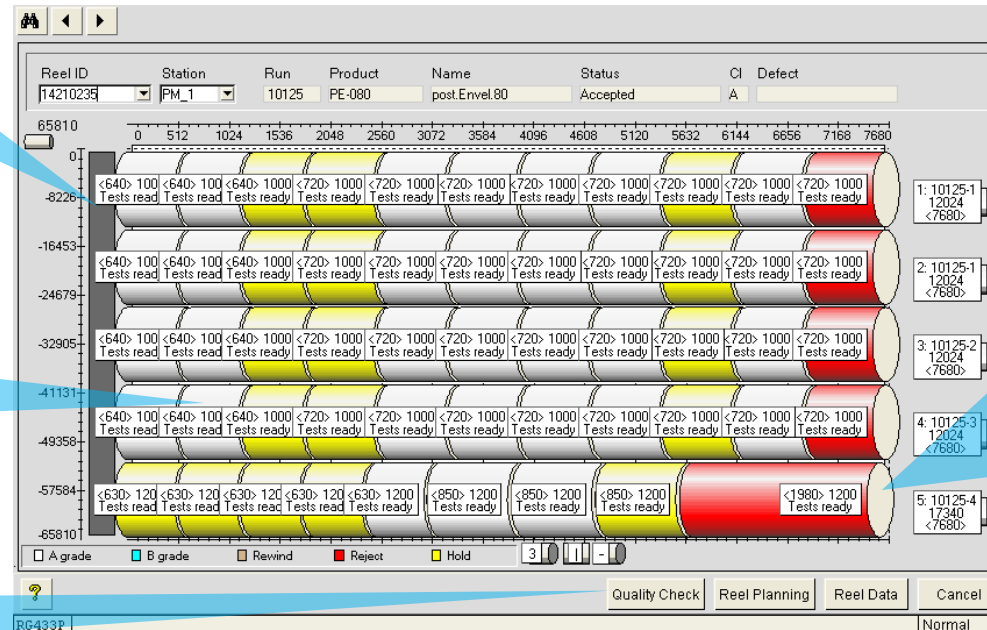
cpmPlus Quality Management

Jumbo roll quality map

Quality map of jumbo shows classification of each roll

Roll labels indicate customer and roll dimension

Quality data and reel data is available for each individual roll



After PM user can make re-trimming plan or re-classify rolls to reduce waste material. Re-classification may mean selecting a different customer, different grade or accepting reject roll as B-quality.

cpmPlus Production Management

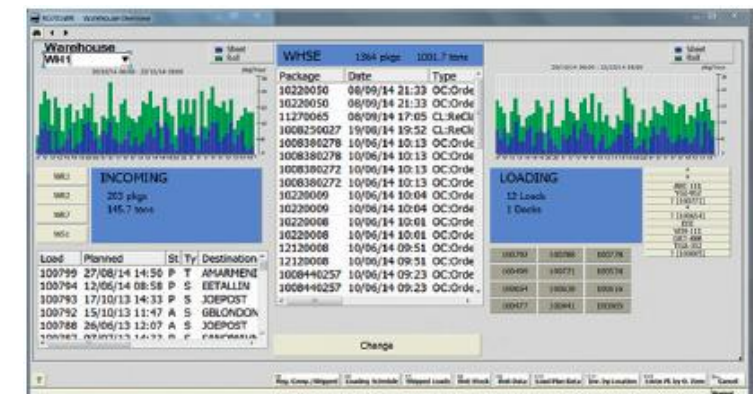
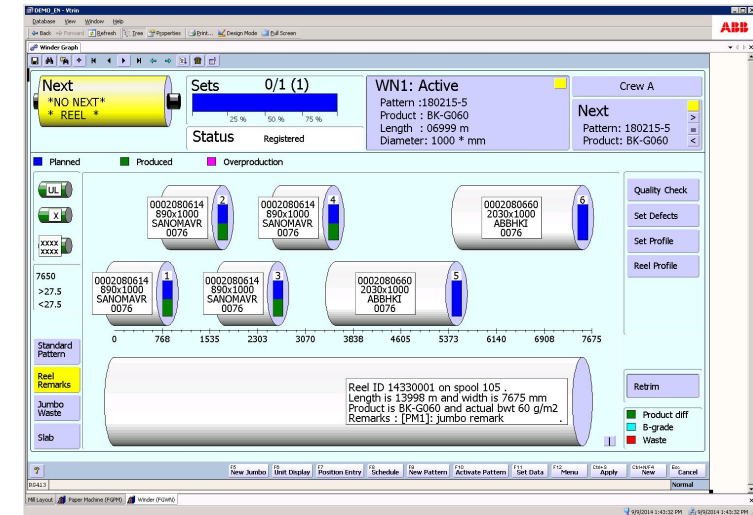
Executing production plans optimally

Key Features:

- Production Management can be used to manage all manufacturing transactions from raw material management, through manufacturing process to the warehouse and finally to truck loading.

Key Customer Values:

- Avoids under/ overproduction
- Reduces inventories (FG, WIP, materials)
- Ensures delivery on time - in full
- Provides full visibility to production
- Provides complete product genealogy
- Provides on-line product costing
- Streamlines operations

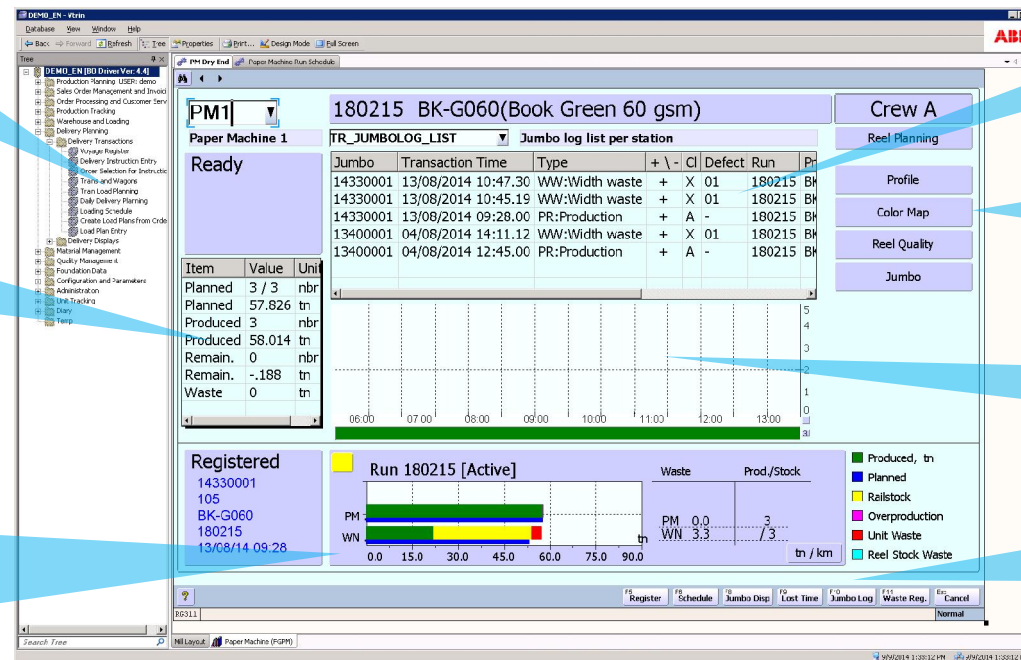


cpmPlus Production Management Paper Machine Dry-end

Production hierarchy
tree for easy
navigation

Status of each
planned order

Run status showing
planned tons,
produced tons on PM
and on Winder. Also
indication on
railstock, waste and
overproduction



List of last actions
for active run

Navigation buttons
for quality data

Time display of PM
production (no
transactions here)

Navigation buttons
to classify events

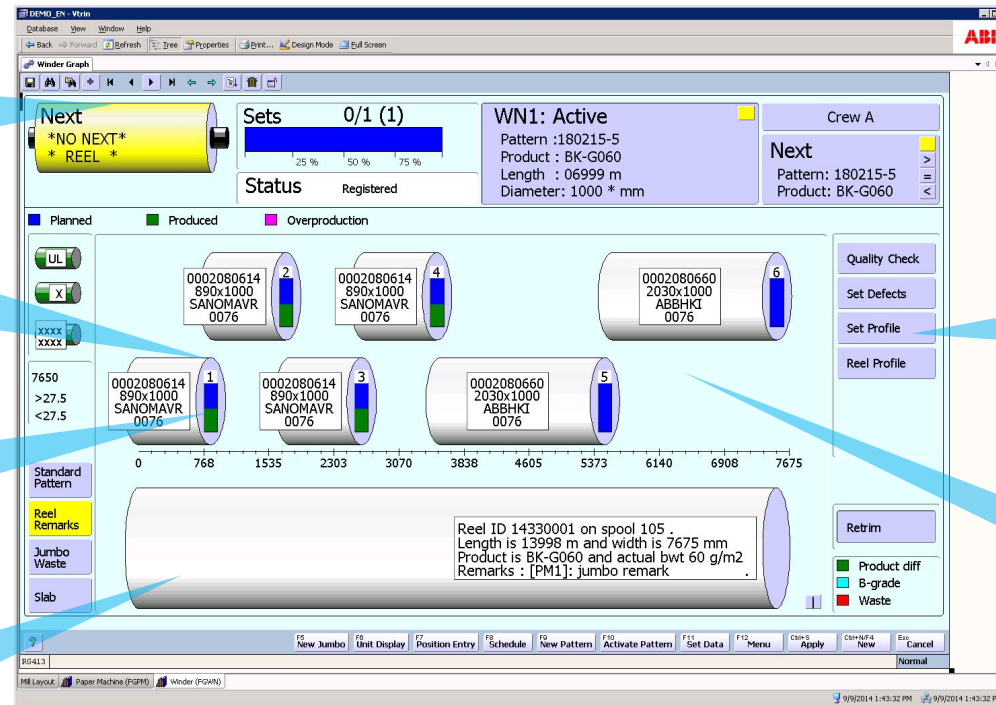
cpmPlus Production Management Winder Station

Production information: active run, next sets, status...

Planned rolls from reel. Labels show ID, dimensions and customer.

Color bars indicate production status. Green = produced.

Reel ID information



Navigation buttons for quality data

Each roll can be clicked to see color map, profile, defect map etc.

cpmPlus Production Management Sheeters

The screenshot displays the cpmPlus Production Management Sheeters interface. The interface is divided into several sections:

- Run Status:** A box on the left contains the following information: Run/Pattern 190088 / 1, Sets 9 / 8, Product PR-A060, Gram.load 300 g/m2, and Sheets/stack 10000. Below this is a green bar representing the production speed.
- Sheet size + actual production speed:** A box on the left shows the sheet size 700 820 and the actual production speed 0 m/min.
- Skids waiting to be registered:** A box on the left shows two skids, each labeled 700 820 SW and P002.
- Mounted rolls:** A section on the right shows five rolls, each labeled 1 1460 5732. A callout indicates that a roll can be clicked to open roll specific data.
- Rolls waiting on floor storage area:** A section on the right shows five rolls, each labeled 1 1460 9012. A callout indicates that these rolls are waiting on the floor storage area.

The interface also includes a top bar with the title FS1 and a button Crew X. The bottom bar contains a question mark icon and a Cancel button.

cpmPlus History Process Data Management

Value added applications for pulp and paper

Key Features:

- cpmPlus History is a database to store all process measurements as frequently as possible and as long as needed.
- cpmPlus History is used to view, analyse and report process information using it's built-in application development tools.
- cpmPlus History is the foundation for many value added applications such as Energy Manager and cpmPlus OEE.
- Can be easily integrated to other systems (ERP, DCS) via direct interface.

Key Customer Values:

- Fast, easy access database for all process data
- Creates full transparency in online process and history data.
- Together with added application creates measureable value.

Interfaces

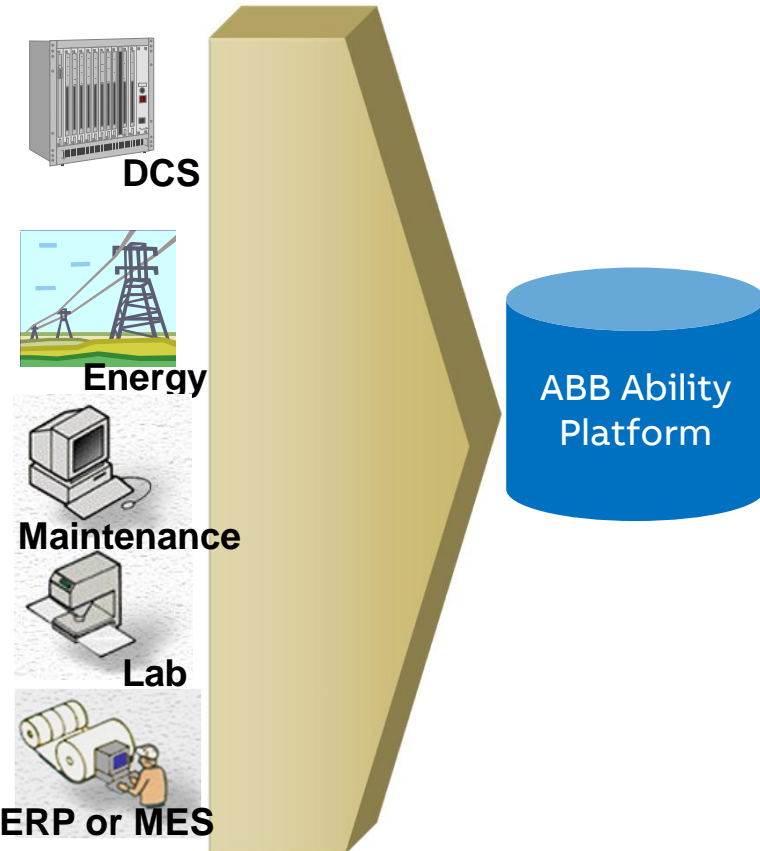


ABB Ability™ Collaborative Operations

Collaborative Operations provides ability to improve plant availability, performance, and quality

ABB Collaborative Operations Centers



Customer Operations Centers

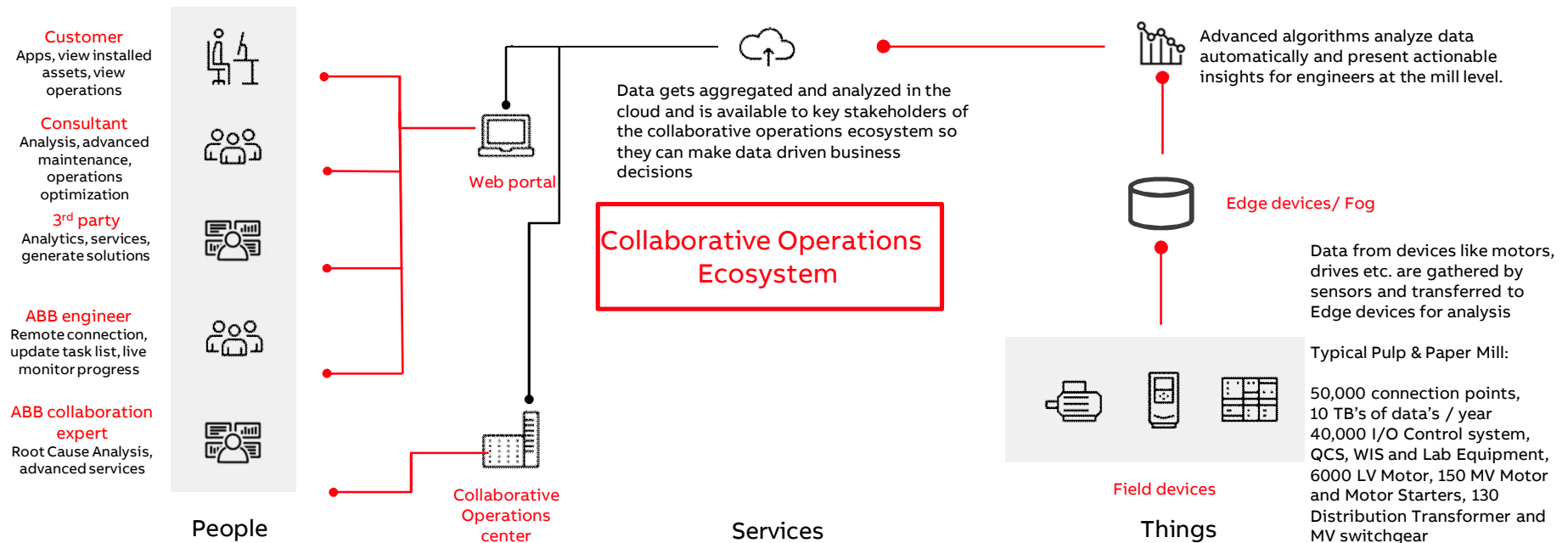


ABB Ability™ Platform



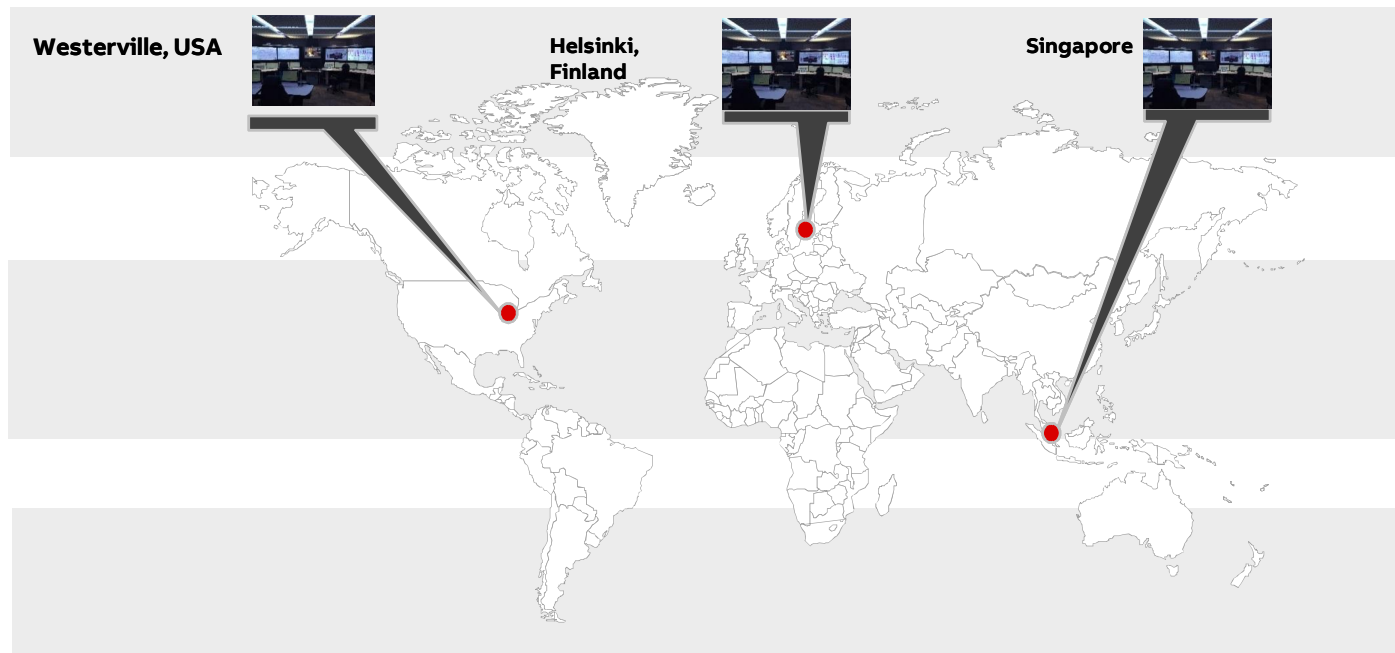
Collaboration in data-driven ecosystem

People make the difference



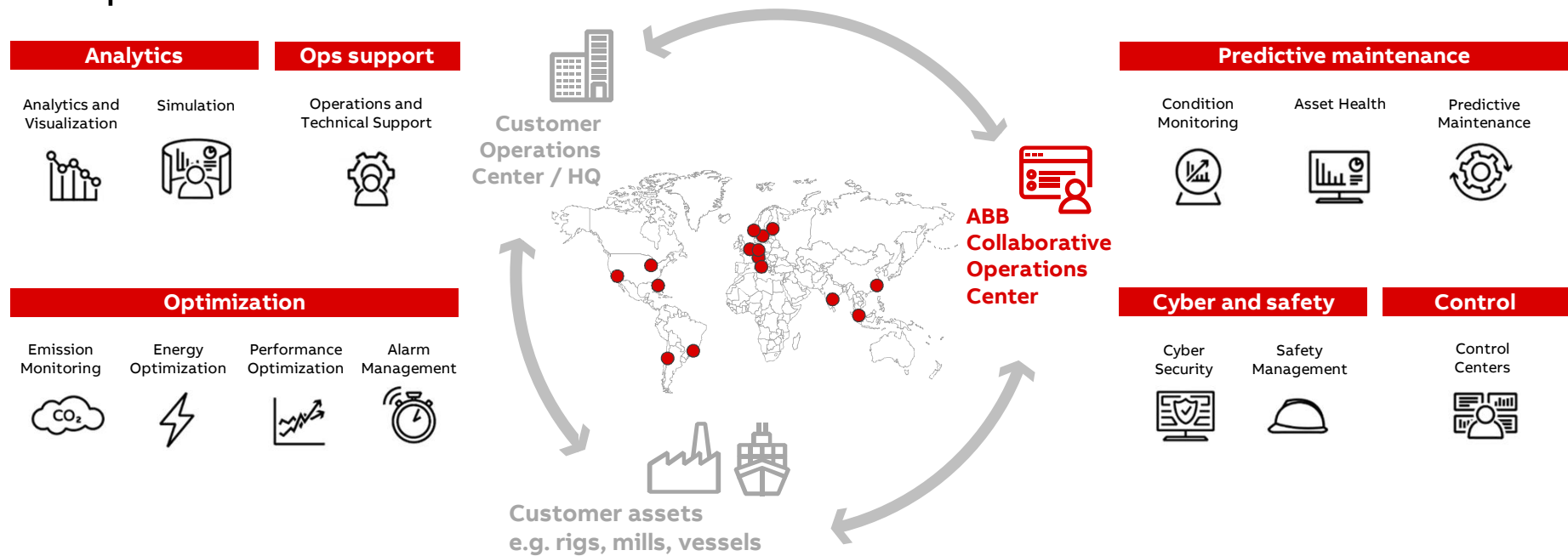
Collaborative Operation Centers for Pulp and Paper

Follow-the-sun strategy for pulp and paper customers



Leading solutions for ABB Ability™ Collaborative Operations

Collaborative Operations turns data into money at single plants and across enterprises

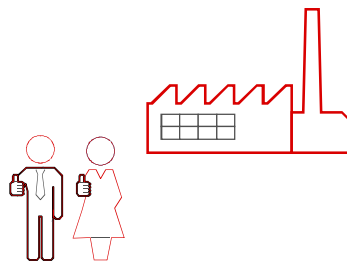


Process Performance Improvement Digital Services

Digital technologies accelerate service delivery and value

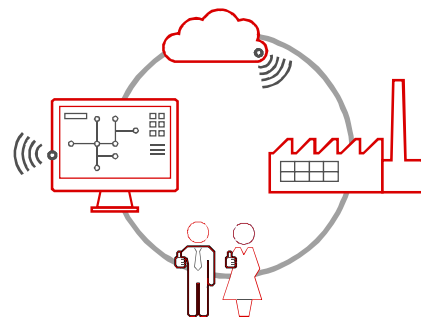
Traditional Services

Ensure availability
Avoid plant process disturbance
Control costs



Process Improvement Services

Increase Reliability
Improve Process Performance
Reducing quality variances
Productivity improvement



Digital allows us to

Capture knowledge fast
Analyze data quickly
Improve performance continuously

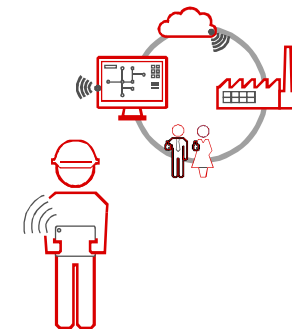


ABB Ability for Pulp and Paper

Turning insights into actions

Fleet

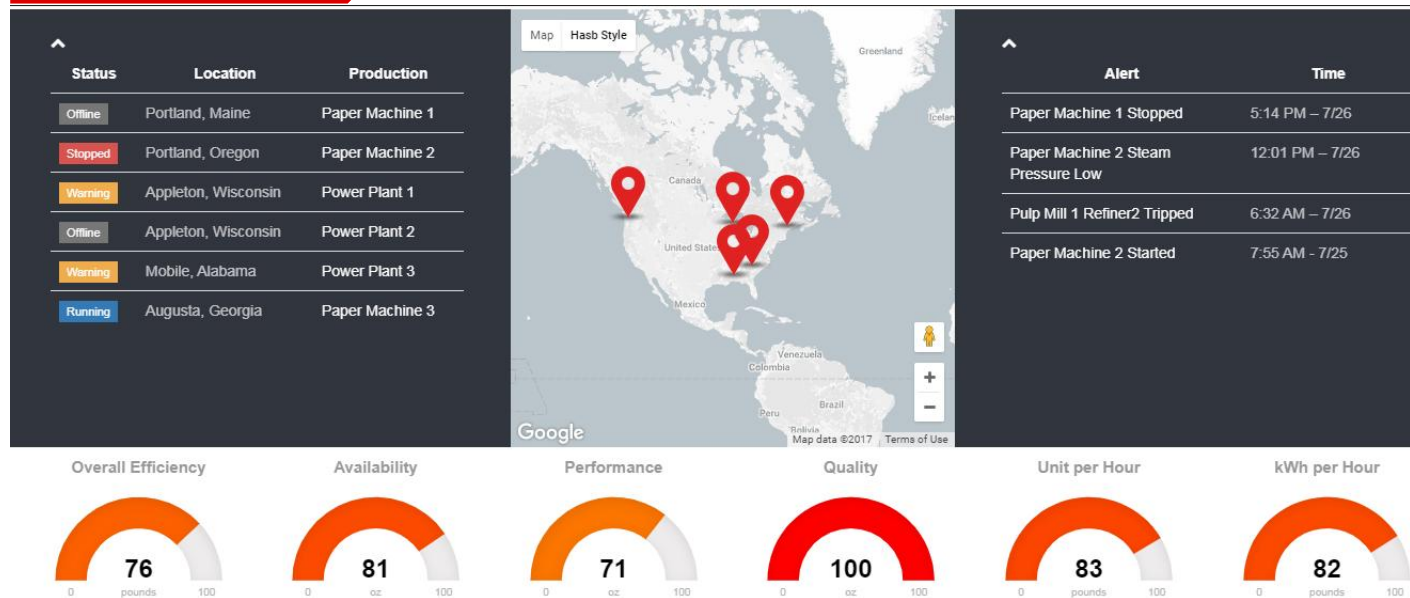


ABB Ability for Pulp and Paper

Turning insights into actions

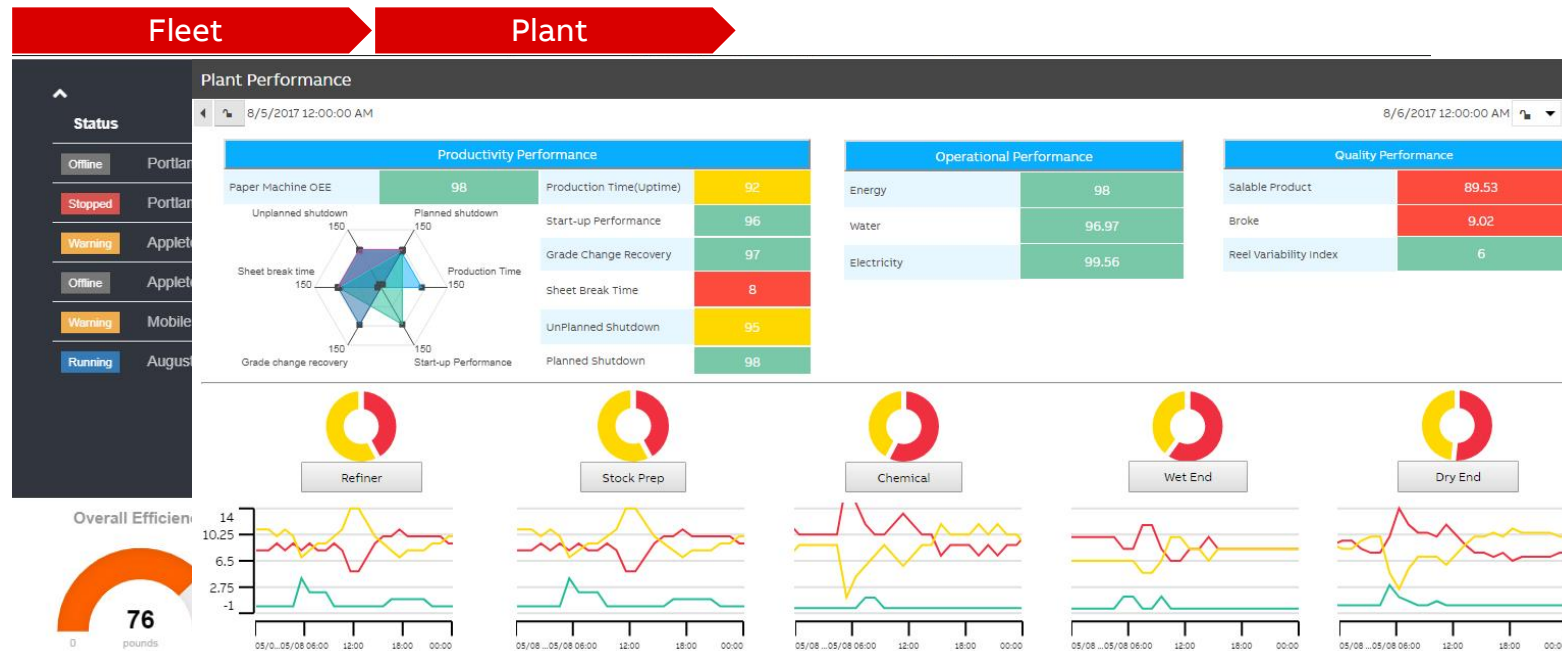


ABB Ability for Pulp and Paper

Turning insights into actions

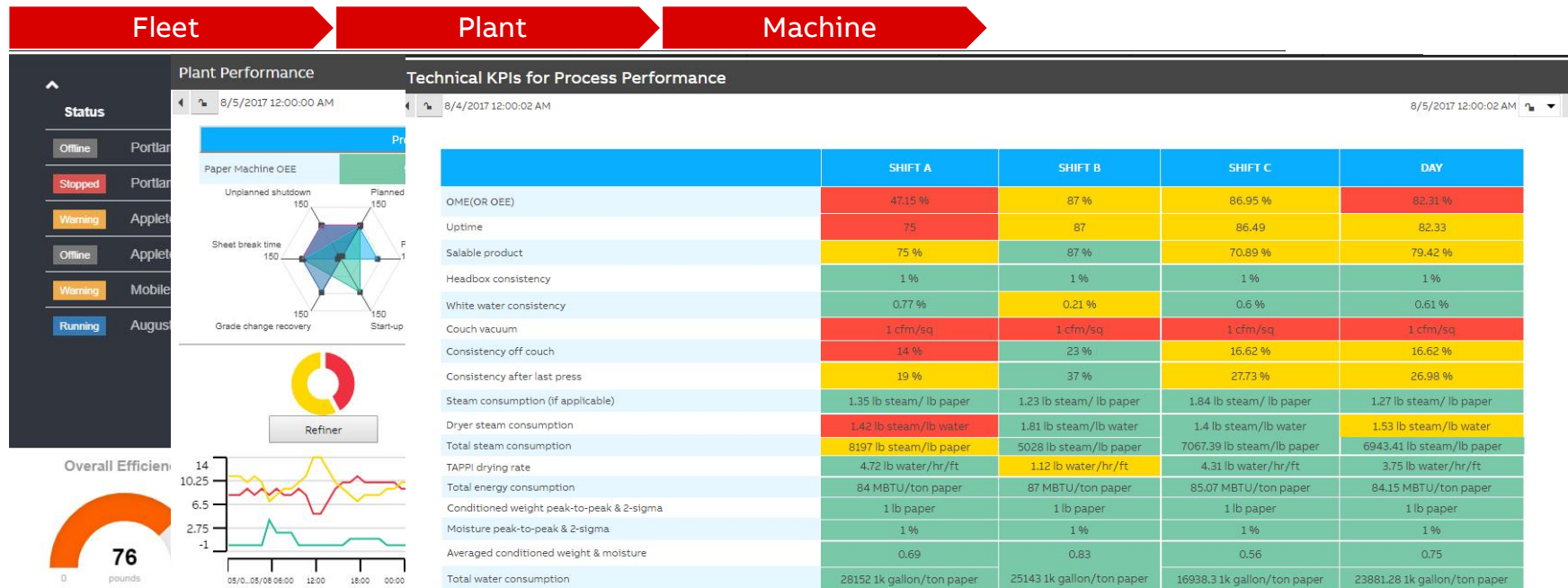


ABB Ability for Pulp and Paper

Turning insights into actions

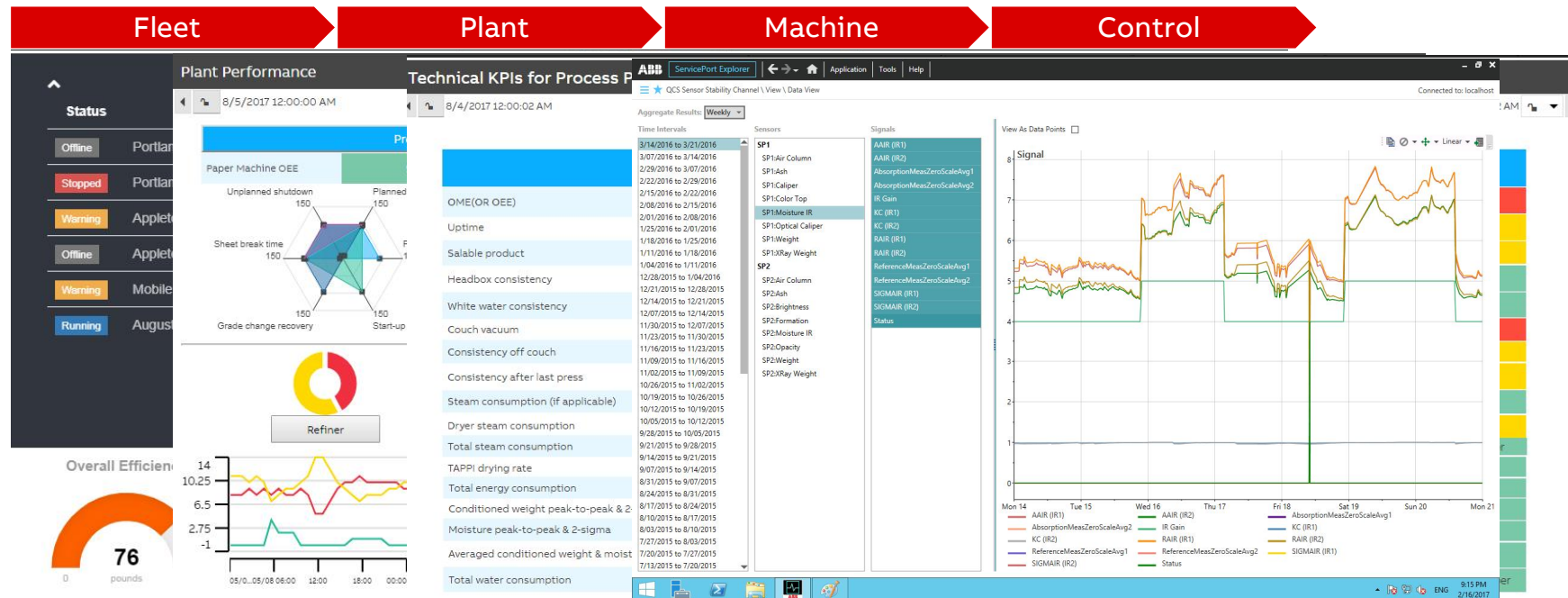


ABB Ability for Pulp and Paper

Turning insights into actions

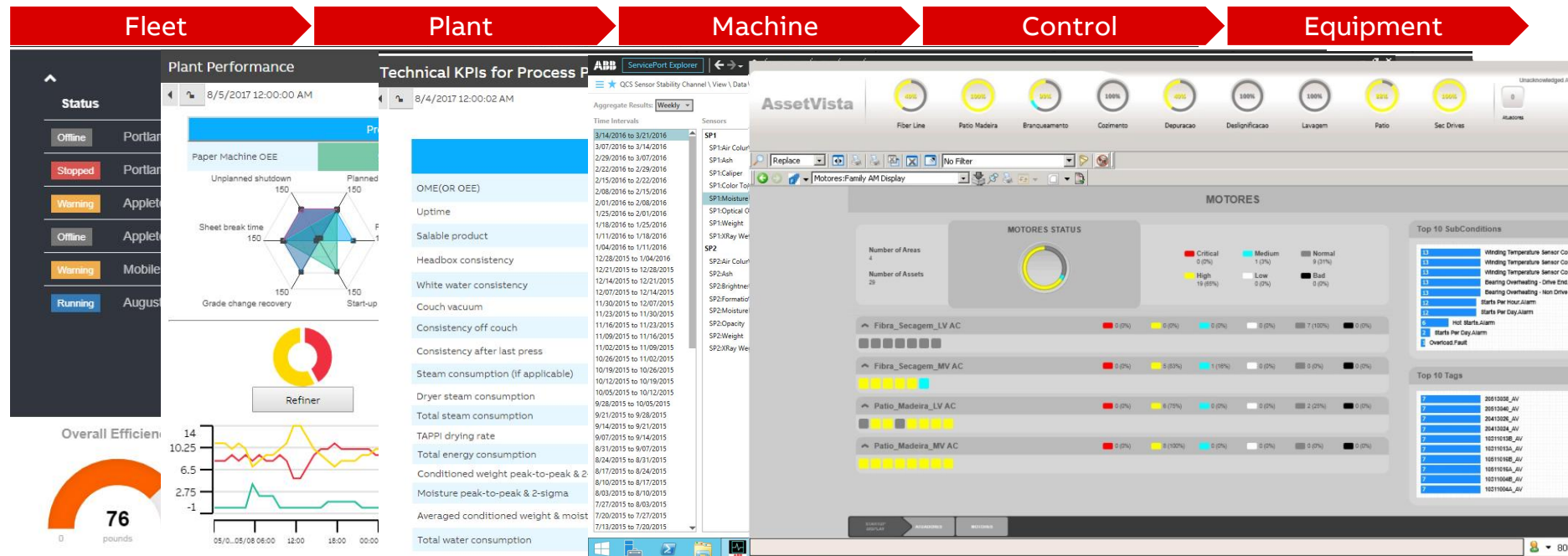


ABB Ability™ Collaborative Operations

Features, Benefits & Business Impact

Paper Machine Performance

Features

- OEE monitoring
- PM/Technical KPI optimization
- Daily performance check
- Action recommendation and execution



Benefits

- Grade change improvement
 - Quality improvement
 - Sheet break reduction
- Start-up time reduction

Expected business impact: 500 KUSD+ / year

QCS Sensor Performance

Features

- Continuous analysis of Sensor KPIs
- Daily performance check
- On demand analysis
- Action recommendation and execution



Benefits

- Improved paper quality

Est. Business Impact: 200 KUSD+ /year

We Have Long History in CPM

Creating value for our customers since 1975



ABB's Experience in CPM for P&P:

- First production tracking system 1975
- First energy management system 1978
- First quality management system 1982
- First trim optimization system 1982
- First production planning system 1993

Over 200 installed systems for Pulp and Paper

Supplier	Rank 2014	Rank 2012
ABB	1	1
OSisoft	2	3
Honeywell	3	2
Schneider Electric	4	4
Siemens	5	7
Rockwell Automation	6	5
Aspen Technology	7	6
Emerson Process Management	8	8
SAP	9	8



ABB is the market leader in CPM for Process Industries

Thank You For Your Attention!

