

# DAT - CON SCR/BT

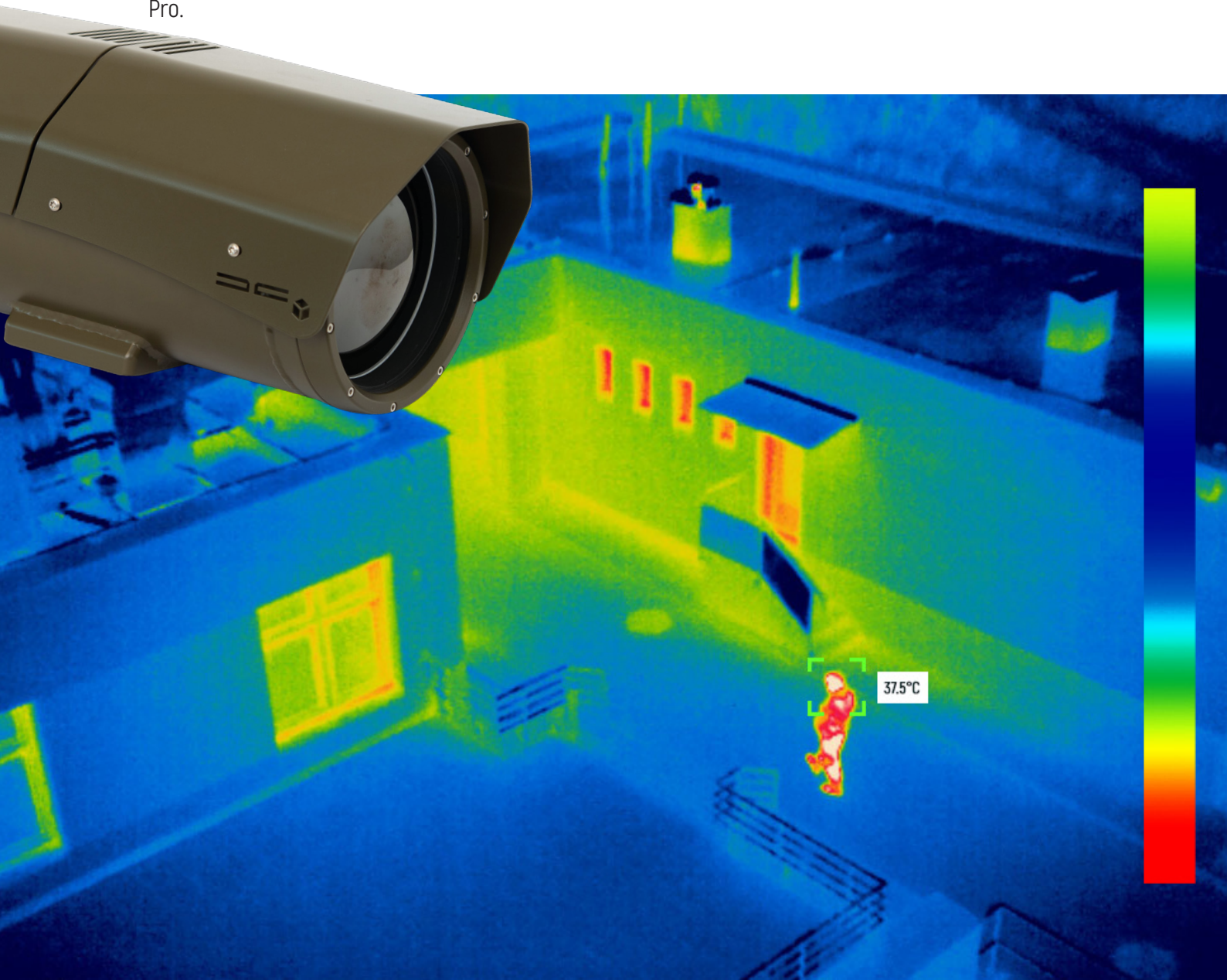


## NON-INVASIVE SCREENING FOR ELEVATED BODY TEMPERATURE

Turnkey solution that allows the operator of a critical public infrastructure (airports, train stations, schools,...) to no-invasively scan the crowd or individuals for elevated body temperature that could be carriers of an infectious disease.

Thermal cameras are passive devices that don't emit any radiation, rather they use infrared radiation emitted from objects (human body in this case) to deliver high-resolution images without the need of any additional illumination. It just so happens that the infrared radiation that camera can detect is proportional to the actual temperature of the object (human body) which is the critical factor as to why thermal cameras are a perfect tool for this task. Operator only needs a PC with Windows 7, 10 or Pro.

DAT - CON SCR/BT can use several modes of operation depending on application: - Single person scanning with reference by detecting absolute body temperature - Multi person by scanning of crowds and detecting people with higher body temperature.



## THE IMPLEMENTATION

The implementation can be either fixed installations or portable. Once detection is triggered, a visual / audio alarm will appear showing the person / persons with elevated body temperature on the computer screen. Depending on the implementation and the operator's policies, this person / persons can then be taken out of the cue / crowd to get further medical assessment. More than 25 persons can be detected simultaneously.

## SYSTEM OPTIONS

- Fixed installation or portable
- Temperature difference in a crowd or single person absolute temperature with reference
- Soft alarm (visual and sound alarm on PC)
- External sound alarm
- Possible signal output
- Routing passengers with signal lights
- Customizable by customer requirements



## INFRARED CAMERA

Sensor	Uncooled, LWIR
Resolution, pixel	384x288
Pixel Size	17
Focal Length, mm	10
FOV, °	37,6 x 28,6

## VISIBLE LIGHT CAMERA

Resolution, pixel	1920X1080 (CMOS)
-------------------	------------------

## BLACK BODY

Temperature Stability Accuracy, °C	≤ ±0,2
------------------------------------	--------

## TEMPERATURE MEASUREMENT

Measurement Range, °C	+20 ... +50
Measurement Accuracy, °C	≤ ±0,3
Temperature Correction	Internal and external black body, automatic calibration

## INCLUDED

Camera
Software
Black body
2 tripods

## HOUSING INTERFACES, TEMPERATURE MEASUREMENT

Protection	IP 65
Interface	RJ 45
Voltage, V	12
Operation Temperature, °C	0 ... +30 (Environment temperature +16 ... +30 )
Storage Temperature, °C	-20 ... +60
Operation Humidity, %	< 90 (Non-Condensing)

## SOFTWARE FUNCTION

Historical data query	Query and process historical alarm data
Alarm / snapshot	Three levels alarm setting, alarm snapshot, sound alarm
Other Parameter settings	Video adjustment, alarm temperature setting (three levels alarm), full screen mode setting, image segmentation setting, blackbody reference temperature setting, etc
Double spectrum match	Intelligent match of thermal imaging and visible light, synchronous alarm
Temperature measurement	Face recognition, Intelligent human temperature tracking measurement, intelligent human temperature correction